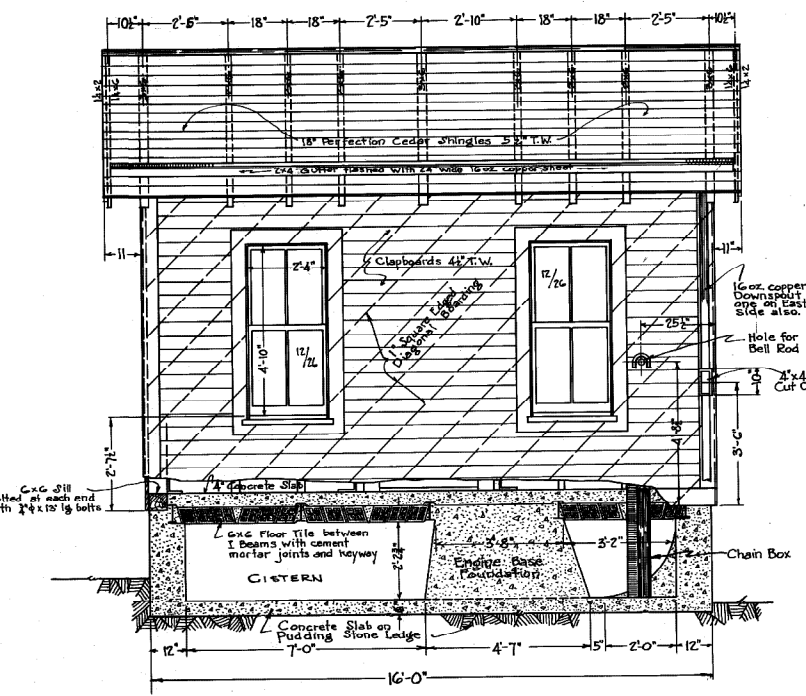
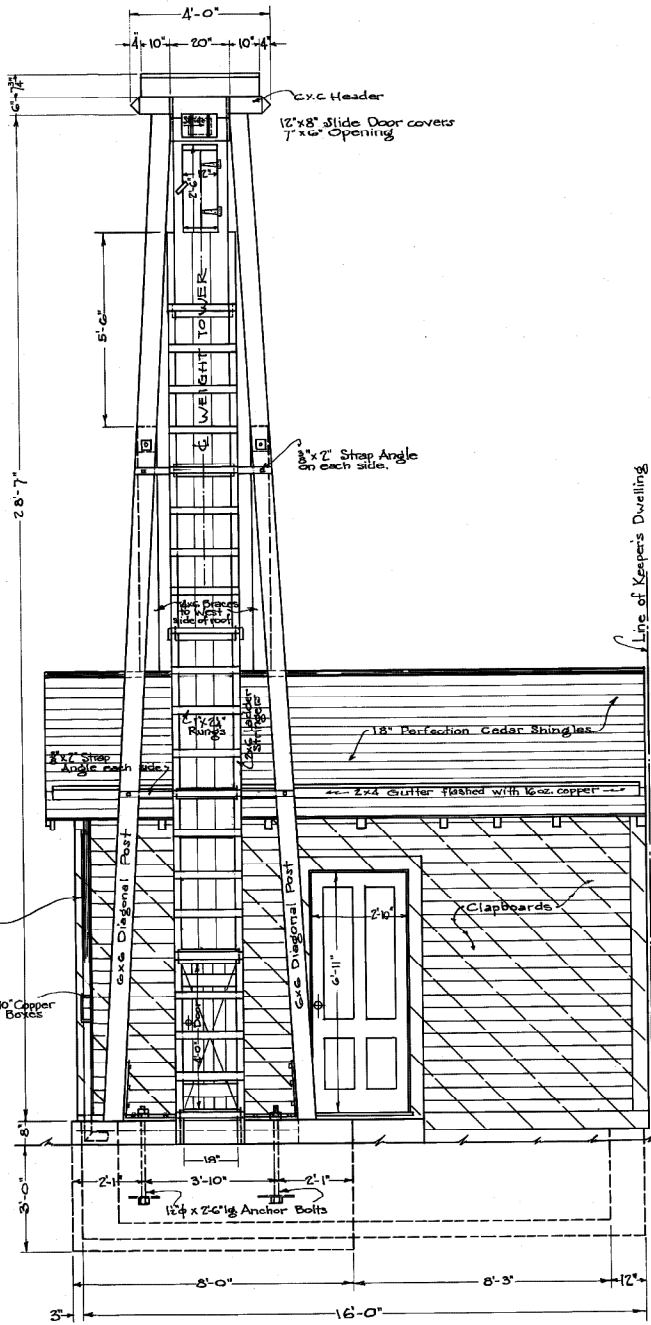


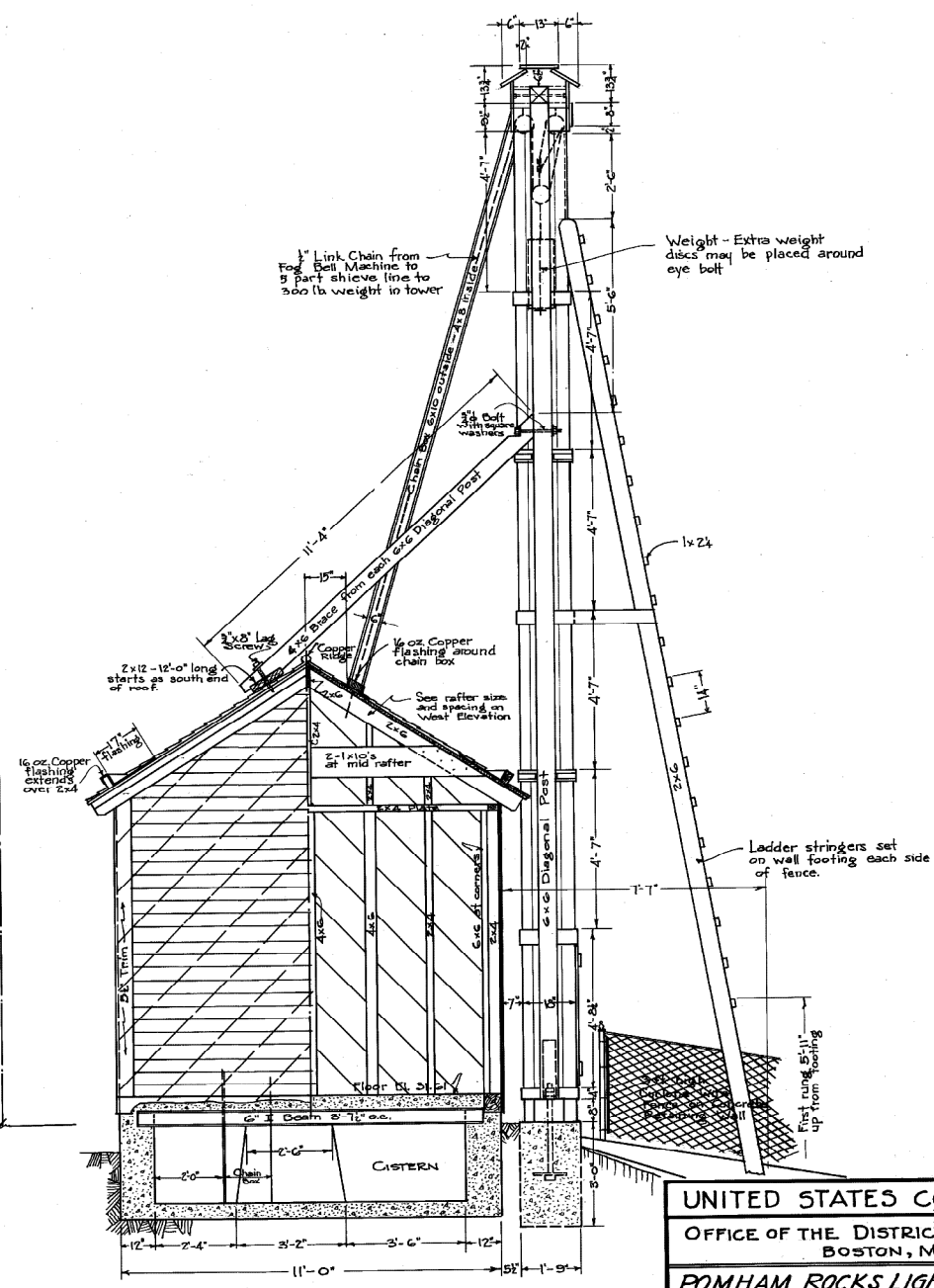
PLAN



WEST ELEVATION



EAST ELEVATION



SOUTH ELEVATION SECTION

UNITED STATES COAST GUARD
 OFFICE OF THE DISTRICT COMMANDER
 BOSTON, MASS.
POMHAM ROCKS LIGHT STATION-R.I.
FOG SIGNAL BUILDING AND
WEIGHT TOWER
 SCALE 3/8" = 1'-0" APPROVED DEC. 2, 1932
 [Signature] LIEUTENANT [Signature] DISTRICT ENGINEER
 DRAWN [Signature] SHEET 1 OF 1
 TRACED [Signature]
 CHECKED [Signature] No 2614

E.S.I. FILE CAMP IRVINE CA
 12.9.39
 E.H. 24