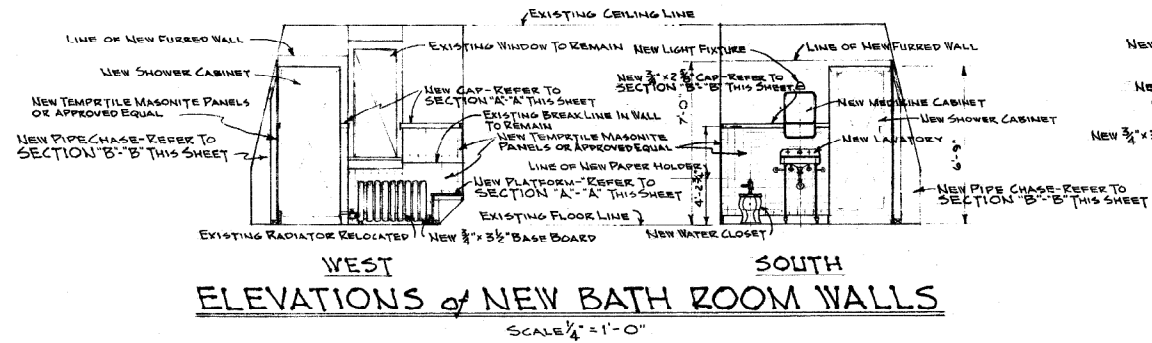
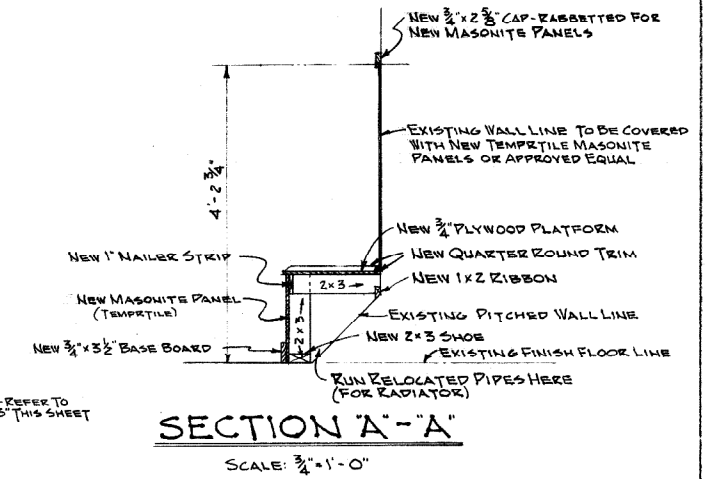


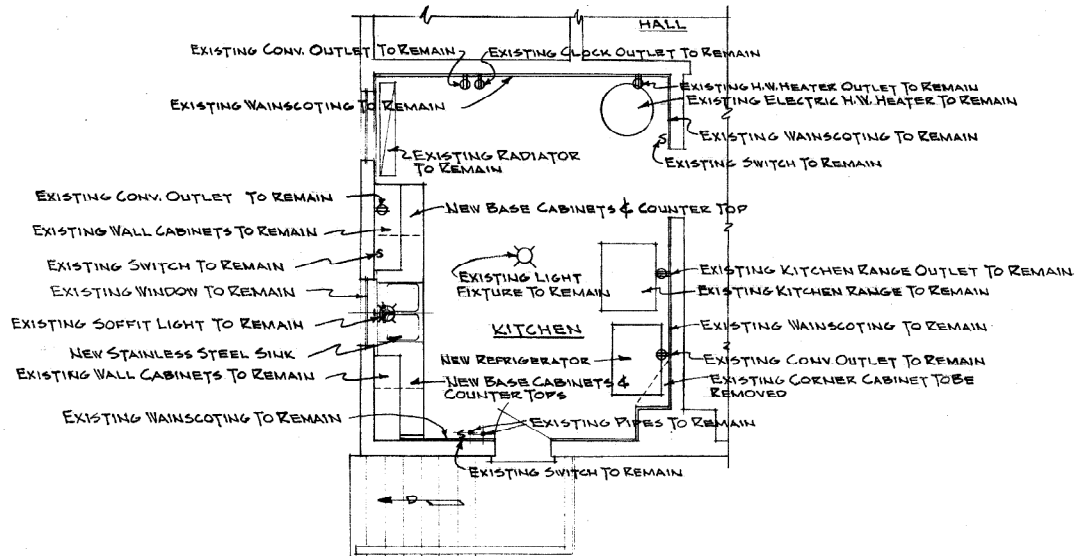
**ELEVATION of SOUTH KITCHEN WALL**  
SCALE: 1/4" = 1'-0"



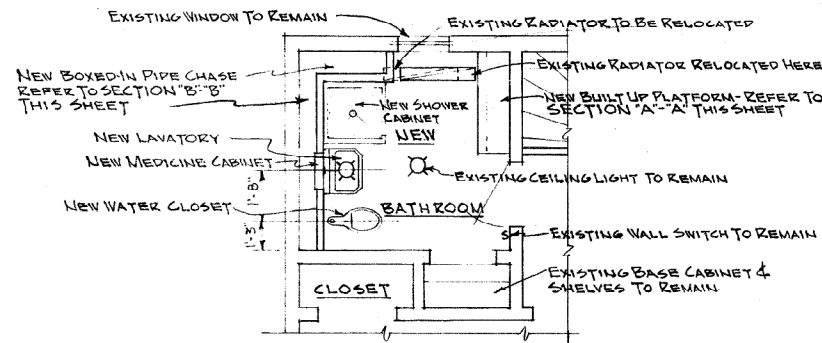
**WEST SOUTH ELEVATIONS of NEW BATH ROOM WALLS**  
SCALE: 1/4" = 1'-0"



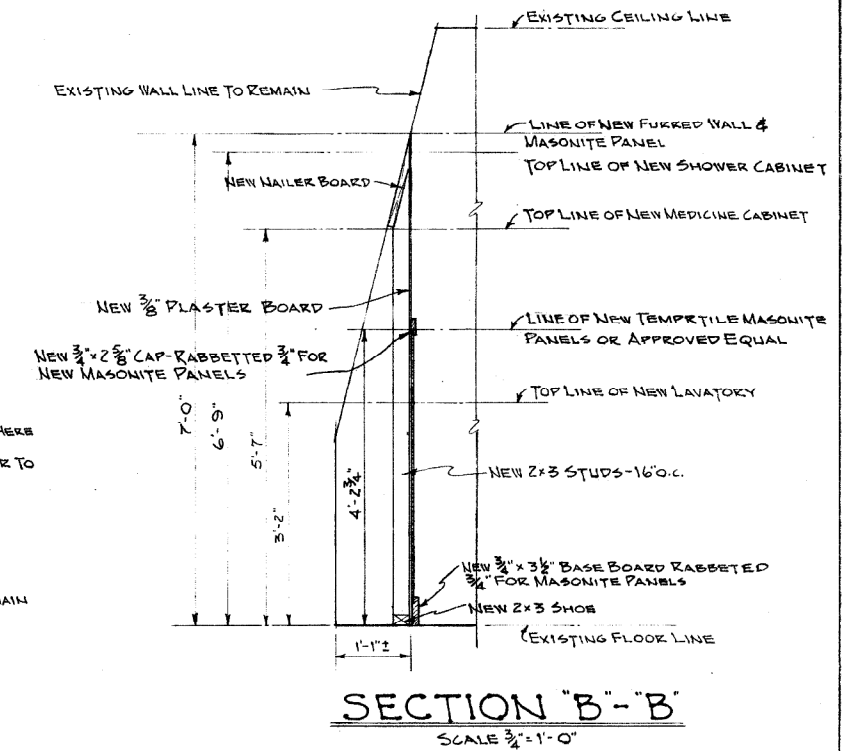
**SECTION A-A**  
SCALE: 3/4" = 1'-0"



**PART FIRST FLOOR PLAN**  
SCALE: 1/4" = 1'-0"



**PART SECOND FLOOR PLAN**  
SCALE: 1/4" = 1'-0"



**SECTION "B"-B**  
SCALE: 3/4" = 1'-0"

DATE	PART	NO.	FIRST DISTRICT	BOSTON, MASS.
CIVIL ENGINEERING				
<b>POMHAM ROCKS LIGHT STA.</b>				
RIVERSIDE, RHODE ISLAND				
ADDITIONS AND ALTERATIONS				
TO DWELLING & FOG SIGNAL BLDG				
KITCHEN AND BATHROOM				
PLANS & DETAILS				
APPROVED	DATE			
<i>Rudomell</i>	MAY 22, 1928			
S.S.C. CHIEF OF DIVISION				
G.C. DRAWING NO.				
<b>5215</b>				
SCALE AS SHOWN SHEET 2 OF 5				

*Superseded*