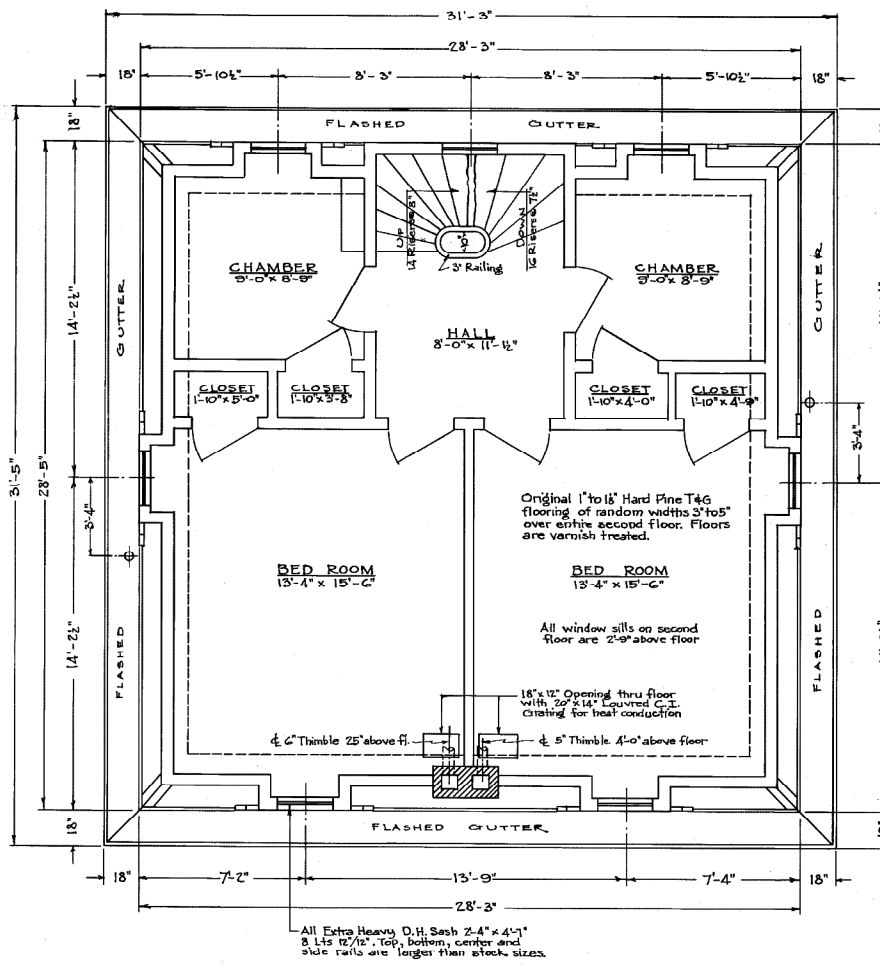
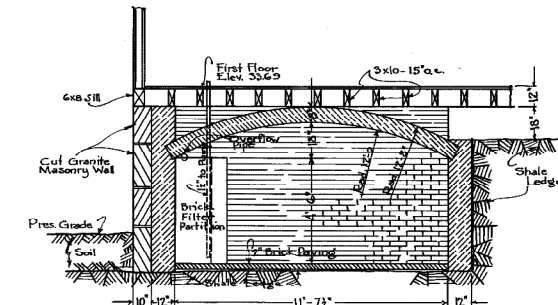


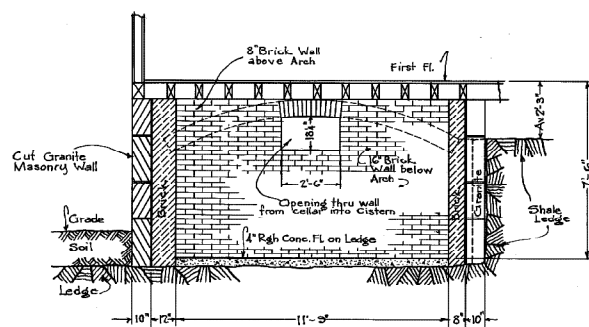
FIRST FLOOR PLAN



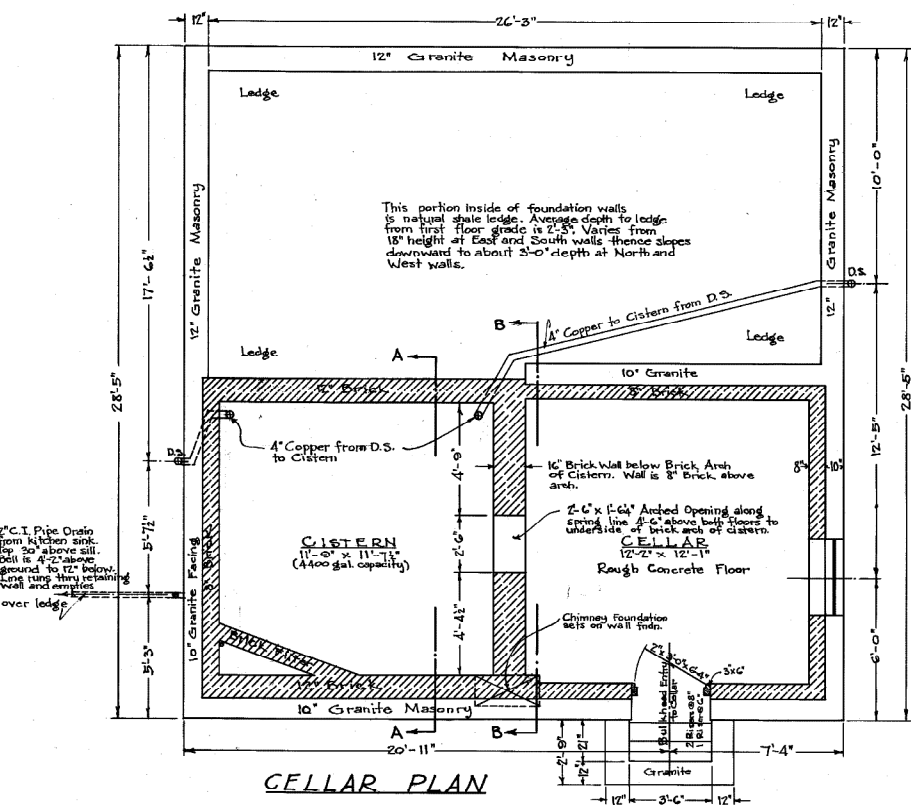
SECOND FLOOR PLAN



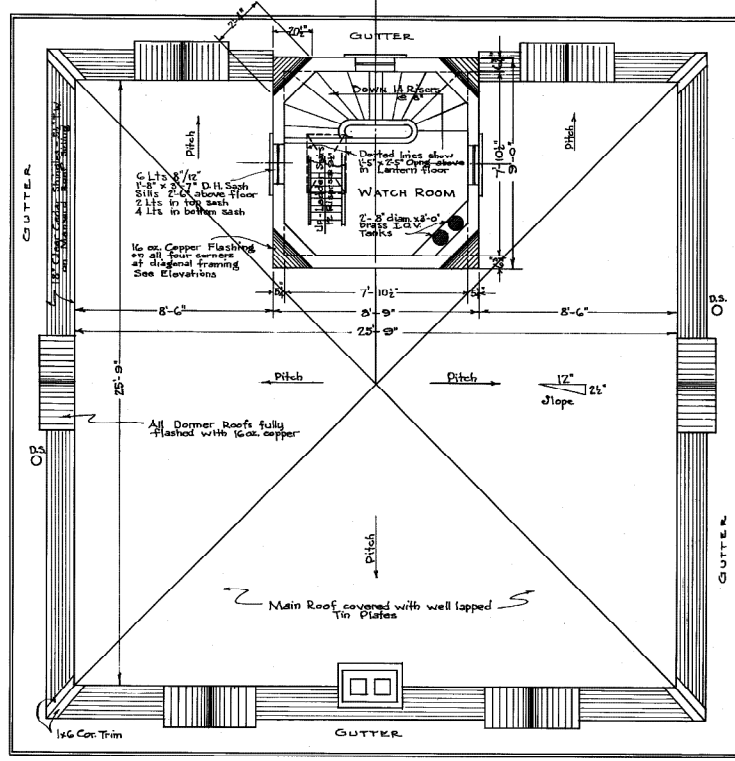
SECTION A-A



SECTION B-B



CELLAR PLAN



WATCH ROOM AND ROOF PLAN

UNITED STATES COAST GUARD  
 OFFICE OF THE DISTRICT COMMANDER,  
 BOSTON, MASS.  
**POMHAM ROCKS LIGHT STATION**  
 RIVERSIDE - RHODE ISLAND  
 KEEPERS DWELLING  
 SCALE 1/4" = 1'-0"  
 APPROVED Jan. 26, 1940  
 DRAWN: [Signature]  
 TRACED: [Signature]  
 CHECKED: [Signature]  
 SHEET 1 OF 5  
 No 3546

BOSTON FILE CORP. DRAWING CO.  
 1-26-40  
 1/5