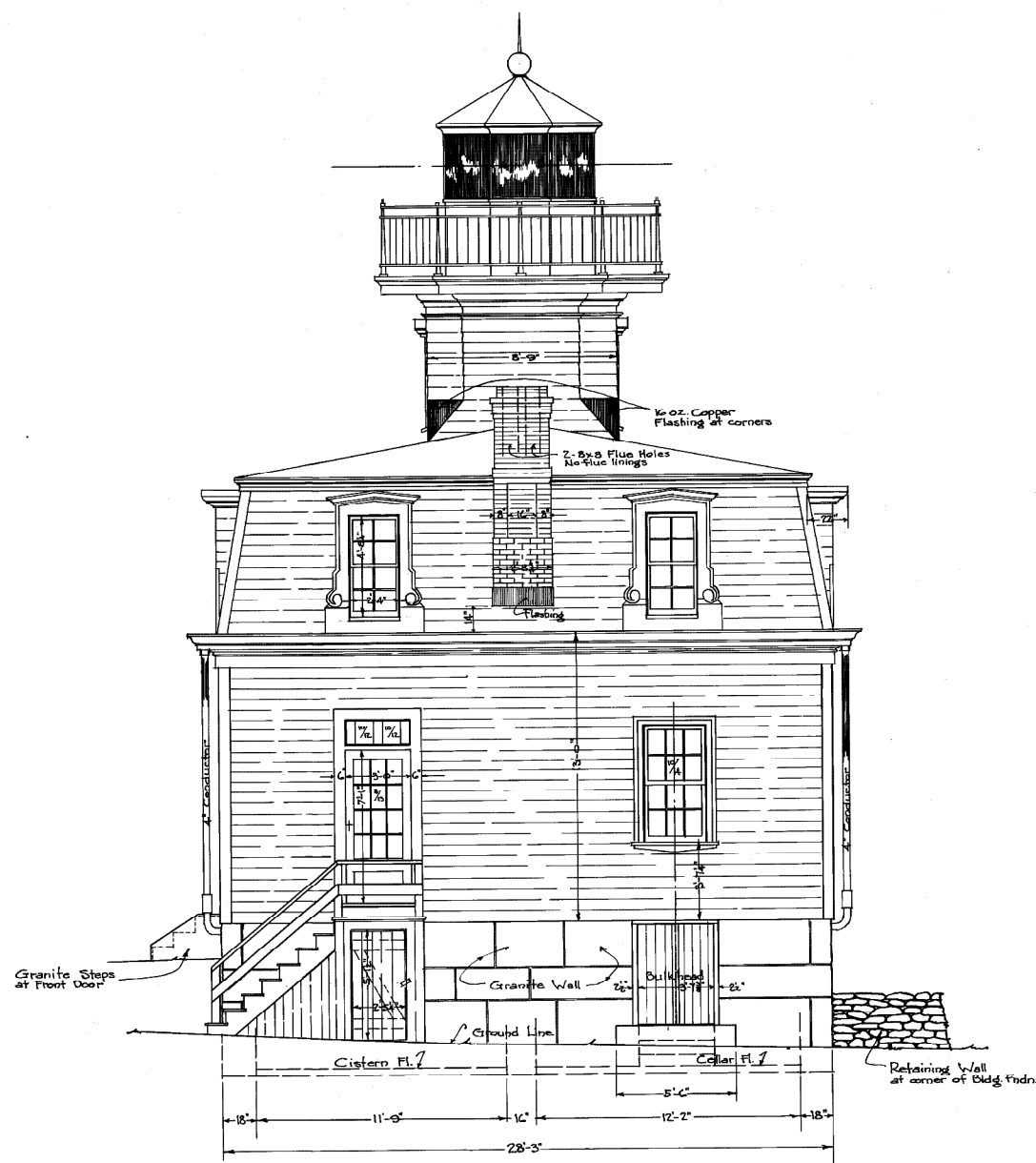


NORTH ELEVATION



EAST ELEVATION

Note: All shingles, flashing and trim installed in 1939 by Elliott & Watrous, Inc. New shingles laid over old clapboards.

UNITED STATES COAST GUARD	
OFFICE OF THE DISTRICT COMMANDER BOSTON, MASS.	
POMHAM ROCKS LIGHT STATION RIVERSIDE - R.I.	
KEEPER'S DWELLING - ELEVATIONS	
SCALE 1/4" = 1'-0"	APPROVED Feb. 20, 1940
<i>Capison</i> LIEUTENANT	<i>Botham</i> DISTRICT ENGINEER
DRAWN <i>REOK</i>	SHEET 4 OF 5
TRACED <i>REOK</i>	
CHECKED	N ^o 3546

FILE NO. 3546
2-20-40

415