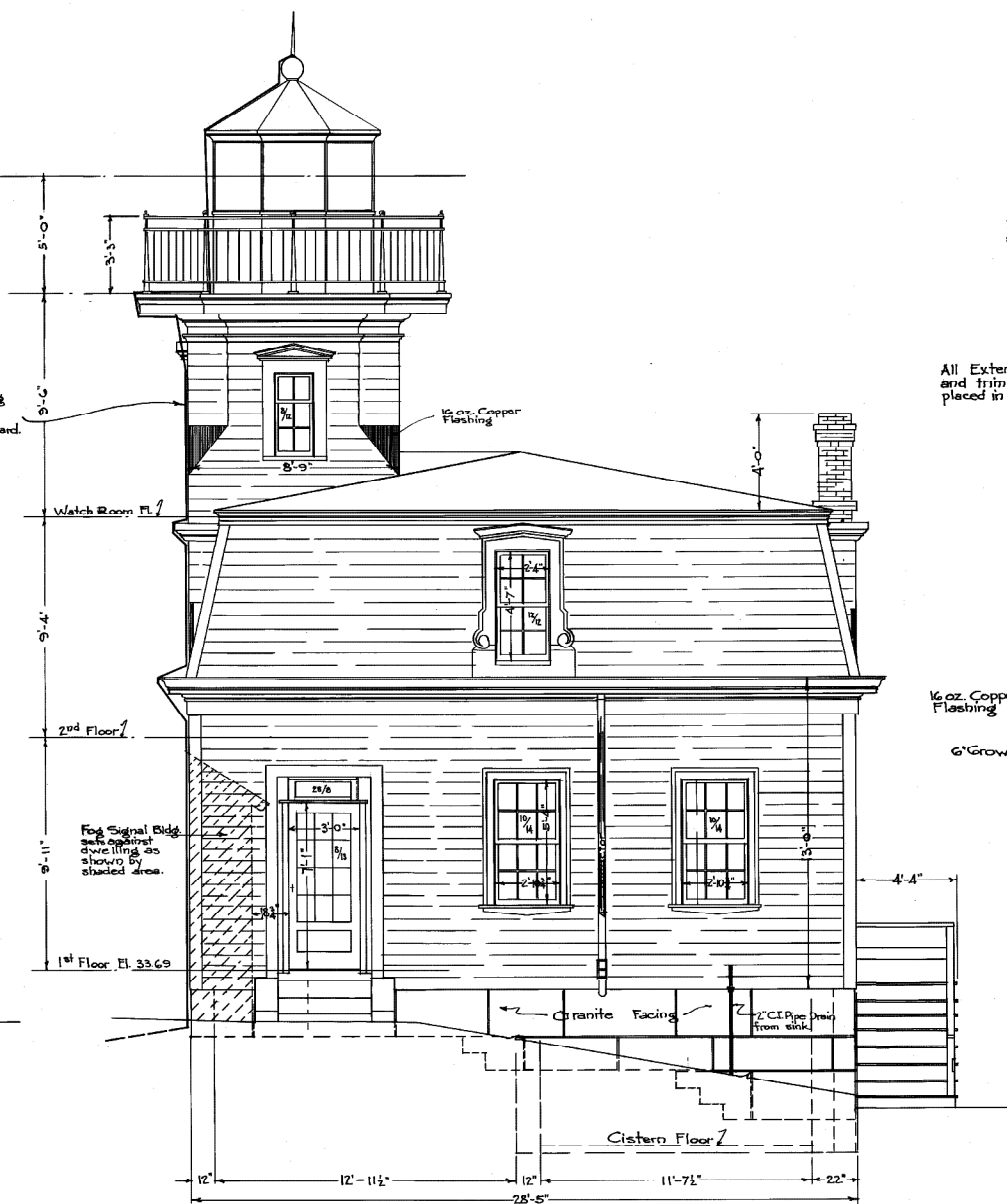
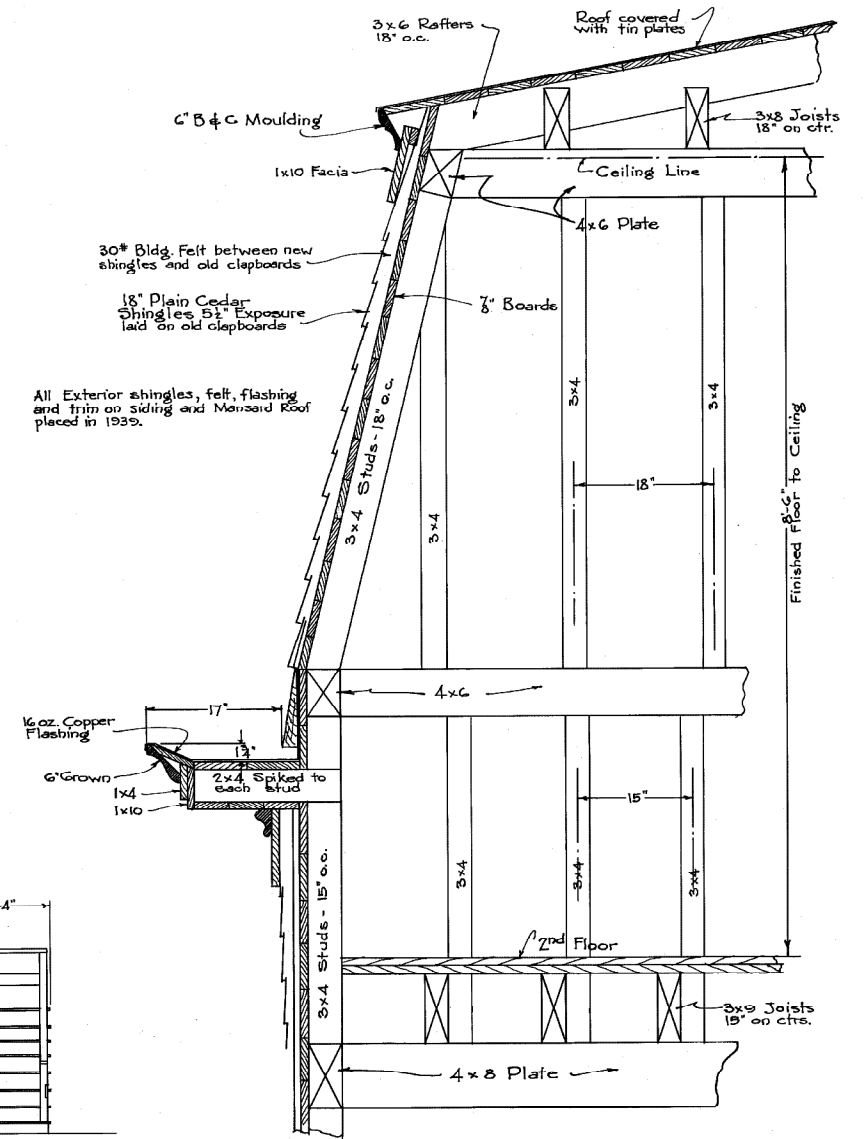


WEST ELEVATION



SOUTH ELEVATION

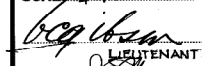
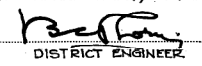


MAIN SECTION THRU  
MANSARD ROOF  
Scale 1"=1'-0"

UNITED STATES COAST GUARD  
OFFICE OF THE DISTRICT COMMANDER  
BOSTON, MASS.

POMHAM ROCK'S LIGHT STATION  
RIVERSIDE - R.I.  
KEEPERS DWELLING

SCALE 1/4" = 1'-0" APPROVED FEB. 27, 1949


  
 DISTRICT ENGINEER      LIEUTENANT  
 SHEET 5 OF 5  
 No 3546

ES&I FILE COMP. IRVINE, CA  
2-27-40  
S/S