



THE POMHAM GLOW

June 2008 · Volume 3 · Issue 1

Friends of Pomham Rocks Lighthouse,
A Chapter of the American Lighthouse Foundation

Mission Statement

To ensure the historic restoration and preservation of Pomham Rocks Lighthouse and to improve public awareness, appreciation and access to Pomham Rocks Lighthouse.

CALENDAR OF EVENTS

HERITAGE FESTIVAL

Friday, July 18 thru
-Sunday, July 20, 2008
Location: Pierce Stadium
201 Mercer Street
East Providence, RI
General Admission:
\$5.00 per person

OLD-FASHION PICNIC

Date: Saturday, August 9, 2008
Time: 1:00-3:00 p.m.
Location: Rose Larisa Park
Across from Crescent Park
Carousel,
Riverside, RI

GENERAL MEETING

Historic Riverside
by David Kelleher
Date: Thursday., Sept. 11, 2008
Time: 6:30 p.m.
Riverside Public Library
Bullocks Point Avenue
Riverside, RI

HARBOR QUEEN CRUISE

Date: Saturday,
October 4, 2008
Time: 4:00 - 7:00 pm
Location: 461 Water St., Gate #4
Warren, RI

GENERAL MEETING

Bizarre Creatures of
Narragansett Bay by David Beutel
Date: Thursday, October 16, 2008
Time: 6:30 p.m.
Riverside Public Library
Bullocks Point Avenue
Riverside, RI

LIGHTHOUSE FLOAT MAKES DEBUT AT RIVERSIDE MEMORIAL DAY PARADE MONDAY, MAY 26, 2008

The Friends of Pomham Rocks Lighthouse community presence skyrocketed during the 2008 Riverside Decoration Day Parade observance in what was our first formal introduction to the local community since Pomham Rocks Lighthouse restoration began.

A first-ever scale model parade float of Pomham Rocks Lighthouse designed and fabricated by Friends of Pomham Rocks Lighthouse Event Chairperson, Chris Allen, was presented to the Riverside community. The float was dedicated to past and present members of the United States Coast Guard and to the memory of all fallen military heroes and also those among us who have served and military personal presently serving.

For the first time, we were able to gaze into the heart of the community and feel a vital part of the local pulse. We looked into the eyes of proud veterans and present service members, elders, children, extended families, disabled folk, visitors, local officials and the gathering as a whole and were able to genially say to each, "good morning, how are you?" There was a bond-of-community lingering about waiting as a prime to spark countless special moments that helped meld our connective closeness as a whole community.

All said, it was time and treasure well spent and well invested. Our faithful volunteers and the Friends of Pomham Rocks Lighthouse came home that morning. The Riverside community was there to greet us with open arms amid many "well done" comments and appreciative applause. We are so pleased and warmed deeply to the soul.

And each night hence, a guiding red light shall shine across nearby Narragansett Bay in part to remind us of our destined role in our kindred community.

And each Memorial Day, let us not forget all of our military heroes.

Respectfully,
Don Doucette, Chairperson
Friends of Pomham Rocks Lighthouse





EDUCATION REPORT

The Education Committee continues to work hard to inform the public of the importance of and interest in the lighthouses of America with emphasis on Rhode Island Lighthouses.

Dave Kelleher's program about Rhode Island Lighthouses is beginning to be popular with educational and historic groups around Rhode Island and nearby Massachusetts.

The program was recently broadcast on Cox Cable Television. Mr. Kelleher was invited to present his program on a series named, "Tea With Marie". It was divided into two parts. Part One was televised on February 1 & 8, and Part Two was televised on February 15. The programs were presented at 3:00 p.m.

Beginning in March, Mr. Kelleher offered the program to schools in East Providence.

A number of letters have been sent to schools that have not had the program yet and a number of schools that have had the program before have asked him to return, including Hennessey, Francis, St. Brendan, and Kent Heights.

The program is also going to be presented at the Annual Meeting of The Retired Teachers of Rhode Island and a Members' Meeting at The Congregation Church of Swansea.

Nancy Moore is making up four new kits for anticipated schools that will hopefully be having the program for the first time. These kits contain guides, library books with a lighthouse theme and activities. The kits are presented to the schools due to funds supplied by The Friends of Pomham Rocks Lighthouse.

Dave Kelleher and Don Doucette have been invited to once again be narrators for the Lighthouse Tours sponsored by Save The Bay. The schedule for these tours has not been set. Don & Dave will be meeting with Save The Bay officials soon.

GENERAL MEETINGS

Presentation: Gaspee Point by Henry Brown

On Thursday, March 6, 2008 at the Riverside Library, Bullocks Point Ave., Riverside, Rhode Island Henry Brown of Warwick, a local historian spoke on the burning of the British ship *The Gaspee*. On the night of June 9-10, 1772, three years before Concord and Lexington, a party of Rhode Island men in eight longboats captured and burned the British customs schooner, *The Gaspee*, wounding her captain and taking her crew prisoners in the first armed conflict of the American Revolution. The incident took place off the Warwick shore in Narragansett Bay, where *The Gaspee* had run aground that afternoon on Namquit Point, since called Gaspee Point.

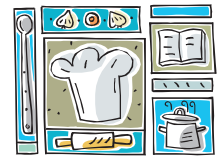
Henry Brown has done extensive research on the history of *The Gaspee* and the area in Warwick. He donated several collections of historical documents pertaining to this event to the Friends of Pomham Rocks. He is a charter member of Gaspee Committee, Literary member of the published 350th History of Warwick, member of the Warwick Historical District Commission and member of the Warwick Wildlife Commission.

Upcoming topics will be ***Historic Riverside by David Kelleher.***

This will be a slide presentation. Some the slides include Bullocks Point Light, Crescent Park, Camp White, Sabin Point Light, Vanity Fair, Boyden Heights Amusement Park, Riverside Square, Little Neck Cemetary, Pomham Club, Pomham Rocks Lighthouse and Squantum. This will be on Thursday, September 11 at the Riverside Library at 6:30 p.m.

On Thursday, October 16th there will be a presentation: ***Bizarre Creatures of Narragansett Bay by David Beutel*** from the Speakers Bureau of University of Rhode Island. This will also be at the Riverside Library at 6:30 p.m. This will be a very interesting and entertaining program.

Mark your calendars and learn more about our area.



POMHAM ROCKS LIGHTHOUSE COOKBOOK

We have decided to work toward publishing a cookbook full of recipes from the members of the Friends of Pomham Rocks Lighthouse. We sincerely hope many members will respond with entries for this delightful proposal. We need several people to help coordinate the project. We would like these people to contact our members and families of former keepers to send their tastiest entries to be incorporated into this cookbook.

You may email your selections to:

Nancy Doucette:

donan1@comcast.net

Dani Medeiros:

solvibes@newebmail.com

Anne Greene:

anneg108@aol.com

Carlene Joiner:

cejoiner@verizon.net

If you have any questions please call Nancy Doucette at 508-226-1185.

You may also send your recipes to:
The Friends of Pomham Rocks Lighthouse
Post Office Box 15121
East Providence, RI 02915

Also, please send your suggestions for a name for our cookbook.

We will need members willing to work on this project as well. We hope to approach families and former keepers for their favorite recipes. It will be a great endeavor and one we will all be able to cherish.





OLD-FASHIONED SUMMER PICNIC

Sponsored by the Friends of Pomham Rocks Lighthouse

Please join us for what will be a lazy-hazy-crazy day of summer!

WHERE: Rose Larisa Park, Riverside, Rhode Island

WHEN: August 9th from 12 Noon to 3:00 p.m.

WHAT: BYOP (Bring Your Own Picnic)*, enjoy the green grass, the beautiful gardens and trees, the sun glistening on the Bay.

Take your children, and yourself, for a ride on the beautifully restored carousel, or pick up a bowl of chowda to compliment your picnic lunch.

You may have seen our float in the East Providence Memorial Day Parade. During or after your picnic you can take a quick jaunt over to the shores of Sabin Point to view the real thing in all its glory.

So, come on along and break bread with us while enjoying the sights, sounds, smells and warm camaraderie of the people who are so dedicated to this cause.

Tell your neighbors, tell your friends; the more the merrier.

For more information please call:

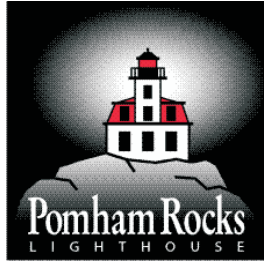
Nancy Doucette: 5-8-226-1185

Chris Allen: 401-433-2152

Dani Medeiros: 508-226-4667

Carlene Joiner: 508-761-5671

**No grilling/cooking available or allowed*



Lighthouse Dinner Cruise

Saturday, October 4, 2008 – 4 p.m. to 7 p.m.

The Harbor Queen of Bay Queen Cruises (Boarding begins at 3:15 p.m.)
461 Water Street, Gate #4 - Warren, Rhode Island

Cruise scenic Narragansett Bay onboard the 85 foot luxury yacht, The Harbor Queen. View several lighthouses and sites of former lighthouses. The highlight of the evening will be the “Gem of Narragansett Bay,” Pomham Rocks Lighthouse, located along the coastline of East Providence, Rhode Island.

The cruise will include a delicious dinner buffet and beautiful Narragansett Bay and many sites along the way. Dave Kelleher and Don Doucette, our resident historians, will narrate the tour.

\$55.00 per person

Seating is limited. Reserve early! Send your check with the reservation form below by October 1st.

Dinner Buffet includes:

Grilled Marinated Flank Steak, Almond Crusted Cod & Scaloppini of Chicken Breast and more.

SPONSORSHIP OPPORTUNITIES AVAILABLE

“Commissioner of the Light” - \$1,000 – reserved table with 8 tickets

“Captain of the Light” - \$500 – reserved table with 4 tickets

“Light Keeper” - \$250 – two tickets

“Light Lighter” - \$100 – one ticket.

All sponsors will be recognized in the event program, the Friends of Pomham Rocks Lighthouse newsletter “The Pomham Glow” and on the FPRL Web site. All donations and proceeds will go to the restoration of the Pomham Rocks Lighthouse. We would appreciate any items or gift certificates you may wish to donate for the fundraising raffles.

Fundraising cruise sponsored by The Friends of Pomham Rocks Lighthouse. A non-profit 501(c)3 organization and Chapter of the American Lighthouse Foundation.

For more information, contact Dave Kelleher – 401-433-2763 or Don & Nancy Doucette – 508-226-1185

Name: _____

Address: _____

City, State Zip: _____

Email: _____ Phone: _____

Number of Tickets: _____ Sponsorship Level: _____

Additional donation for the on-going restoration of Pomham Rocks Lighthouse: _____

Return Form and Check to:

The Friends of Pomham Rocks Lighthouse

Post Office Box 15121

East Providence, Rhode Island 02915

www.pomhamrockslighthouse.org - Email: pomhamrockslighthouse@yahoo.com

CROSSING THE BAR

by Carlene Joiner

Our group was saddened by the passing of three men from the "Greatest Generation."



Unk and Chris Allen at FPRL Annual Meeting, November 2007

Godfrey "Unk" Allen passed away on January 9, 2008 at the age of 90. He was the beloved husband of the late Melora (Stone) Allen.

Born in Providence a son of the late Russell and Alice (French) Allen, he lived in Riverside most of his life. Unk owned and operated the Narragansett Terrace Boatyard for many years and was one of few people possessing the knowledge and ability to design, build and repair wooden yachts. He was a founding member of the Narragansett Terrace Yacht Club and was a member of the American Legion, the Mayflower Society the Sons of the American Revolution, the Roger Williams Family Association, the Varnum Continental in East Greenwich and had served as a member of the Vestry at St. Marks Episcopal Church in Riverside where he had been a member for over 70 years. He was a founding member of the East Providence Historical Society and was a Navy Veteran of WWII. Unk was a renowned and admired member of the community and was known for his generosity and willingness to help others, especially young people wanting to play around and on Narragansett Bay. He leaves two sons, Christopher Allen and Stephen Allen, both of Riverside, three daughters, Martha Forrest of Barrington, Priscilla Allen of

Nacomis FL, Susan Charbonneau of Greensboro, NC, seven grandchildren, two great-grandchildren and nieces and nephews.

James Work, 87, passed away on January 27, 2008. He was the husband of the late Thelma (Gregory) Work.

He was born and raised in Jackson, Maine; a son of the late Harry and Maude (Webb) Work. He later lived in Riverside for 61 years. He worked for Hood's Dairy as a driver, and Crandall's Dairy. He later was a machinist for the former Leeson Corp. for 17 years before retiring in 1985. Mr. Work was a veteran of the Army Air Force serving with the 8th Air Force. He served in England as a B-17 gunner during World War II. His bomber was shot down over the English Channel by enemy fire. He was wounded and rescued by British allies to later recover in England. He is survived by two sons; James G. Work of Cairo, Egypt and Paul D. Work of Barrington, a daughter, Leanne Ayotte of Riverside, a sister, Barbara Grover of Dixmont, Maine, 10 grandchildren, 12 great-grandchildren, and nieces and nephews.



Jim Work standing next to stonework, December 2007

On April 12, 2007, Rev. Stanley Hoglund passed away at age 82. He was the husband of Beryl (Van Pelt) Hoglund and the late Phyllis (Chace) Hoglund. He was born in East Providence to the late Carl and Ester (Sandburg) Hoglund. He lived in East Providence and Riverside for 44 years.

Stanley was a World War II veteran who served with the 296th Combat Engineer Battalion that saw action at Normandy and the Battle of the Bulge. After his discharge, he was employed by the former Providence Steel and Iron Company.

Stanley went back to college and graduated from Barrington College in 1968. He was called into the ministry and graduated with a Master of Divinity from Trinity Evangelical Divinity School, Deerfield, Illinois.

He taught at Moody Bible Institute, Chicago, Illinois and was pastor of Simsbury Baptist Church, Simsbury, CT and was the VFW chaplain.

Stanley is survived by his wife, his two children, Carlene Joiner, Seekonk, MA, Dr. Kenneth Hoglund, Winston-Salem, NC, his brother, Carl Hoglund of Clearwater, Florida, 4 grandchildren, 1 great-granddaughter and nieces and nephews.

On a personal note, Dad and his brother, Carl, would tell me all sorts of stories about the Riverside of their youth. Their obvious love of this area inspired me to help save a small portion of Riverside - Pomham Rocks Lighthouse - for their descendants.



Rev. Stanley Hoglund leading a memorial service in Normandy, France, June, 1994

SENIOR PROJECT ON POMHAM ROCKS LIGHTHOUSE

Scott Damiano, a junior at East Providence Senior High School, chose the History and Restoration of the Pomham Rocks Lighthouse as his senior project.

Scott began his project by attending the dinner cruise sponsored by the Friends of Pomham Rocks Lighthouse in October 2007. There he was able to meet and talk to the board members of the Friends as well as the board members of the American Lighthouse Foundation and see the lighthouse from the water.

Scott did research online and in newspaper articles and in library collection about the lighthouse. David Kelleher was his sponsor.

Scott helped out at the Ham & Bean Supper and will work out at the lighthouse during one of the trips out there during the summer months.

He presented his project to his teachers in May and was well received.

WE ARE GOING STRONG!

The Friends of Pomham Rocks Lighthouse was incorporated in December of 2004! We have done well and the light shining forth from the tower is a testament to our endeavor.

We could use more help, especially on the Event Committee. Chris Allen has assumed the leadership of this committee. The committee has had several meetings and has come up with plans that actually cover the year. If you would like to serve in any capacity, please contact Chris at 401- or email him at callen44864641@aol.com.

One of our greatest challenges is to fundraise for the lighthouse. It takes money to move forward with the restoration and to protect what has already been restored. This committee is attempting to raise funds and also just as importantly, to build our group with fun activities and to reach out to the community.

We also would gladly accept items or services for raffle prizes. If you know someone with a business that would be willing to donate a gift certificate or item, it will be gratefully accepted. The raffles are fun and have become part of our events!

TOUCH-A-TRUCK

The Friends of Pomham Rocks Lighthouse is a member of the East Providence Chamber of Commerce. As a member, we participated in the annual Touch-A-Truck Day. Rob Charbonneau brought his boat over for the children to touch and we brought the cut out model of the lighthouse for them to have their pictures taken.



Children using the cut out model of the Lighthouse



The cut out model of the Lighthouse with Paws, the mascot of the Pawtucket Red Sox and Don Doucette, President of Friends of Pomham Rocks Lighthouse



Pomham Rocks Lighthouse boat with Don Doucette, President of Friends of Pomham Rocks Lighthouse, Dr. Isadore Ramos, Mayor of City of East Providence and Paws, the mascot of the Pawtucket Red Sox

FRIENDS OF POMHAM ROCKS LIGHTHOUSE

A chapter of the American Lighthouse Foundation

MEMBERSHIP FORM

Membership Level:

- | | | | |
|--|-------|---|-------|
| <input type="checkbox"/> Member Light Keeper | \$250 | <input type="checkbox"/> Member Light Lighter | \$100 |
| <input type="checkbox"/> Family Member | \$ 45 | <input type="checkbox"/> Individual Member | \$ 25 |
| <input type="checkbox"/> Additional Donation | | \$ _____ | |

Please Print:

Name: _____

Address: _____

City, State, ZIP: _____

Phone: _____ Email: _____

_____ Check/Money Order enclosed (payable to: Friends of Pomham Rocks Lighthouse)

Mail application to: Friends of Pomham Rocks Lighthouse, P.O. Box 15121, East Providence, RI 02915

Friends of Pomham Rocks Lighthouse
A Chapter of the American Lighthouse Foundation
P.O. Box 15121
East Providence, Rhode Island 02915

