



# THE POMHAM GLOW

Friends of Pomham Rocks Lighthouse,  
*A Chapter of the American Lighthouse Foundation*  
**Mission Statement**

To ensure the historic restoration and preservation of Pomham Rocks Lighthouse and to improve public awareness, appreciation and access to Pomham Rocks Lighthouse.

---

March 2020

---

## TOURS TO POMHAM BEGIN

### JUNE 2020!



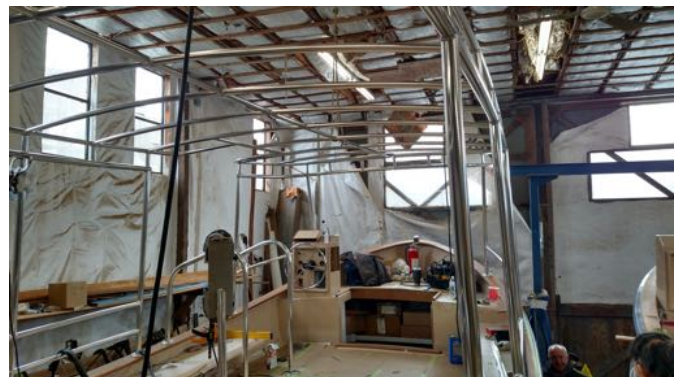
## **PUBLIC TOURS TO POMHAM ROCKS LIGHTHOUSE 2020**

This year we are excited to announce the first public tours to the lighthouse. Tours will be two hours in duration and all participants will be boarding the brand-new *Lady Pomham II* at Al's Waterfront Restaurant in East Providence. A twenty-minute boat ride will take passengers to the island where they will disembark for a tour of our completely restored 1871 lighthouse. Inside, our guests will learn about Pomham Rocks Lighthouse, as well as the history of the four other lighthouses that once stood along the Providence River (Fuller Rock, Sassafras Point, Sabin Point, and Bullocks Point). For more information on dates and cost, please visit our website: <http://pomhamrockslighthouse.org/>

## **CONSTRUCTION OF LADY POMHAM II NEARING COMPLETION**

Our new 26' launch, the "Lady Pomham II" is nearly complete! The final stages of construction are being done which includes railings and framework for the canvas top. With a final coat of bottom paint, some fixtures, electronics and a loadout of required safety equipment, the Lady Pomham II will be ready for sea trials. We expect delivery of our new launch in mid-April. We are planning a Christening Ceremony in conjunction with our Summer Picnic at the Squantum Association on June 7<sup>th</sup>. Details about that event will be released in the near future.

The construction of Lady Pomham II has been closely monitored by U.S. Coast Guard inspectors to ensure the launch complies with 46 CFR, Subchapter "T" regulations for passenger use. The new launch will hold more passengers and will be faster than our current launch. She will be the means to transport passengers to the lighthouse under our new Public Tours program starting in June and to better enable us to fulfill our Mission Statement of 2004 which states in part to "continue to improve public awareness, appreciation and access to the lighthouse."



The funding for the launch is through grants, donations and the sale of our current launch, Lady Pomham, to the Rhode Island Yacht Club. We will still see the original Lady Pomham launch in service at the Rhode Island Yacht Club where she will be renamed the "Stillhouse Shuttle" and be used to transport their members from shore to their boats on moorings and back.



### **MEMBERS ONLY TOURS TO POMHAM ROCKS LIGHTHOUSE 2020**

We will be offering free **Members Only** tours to the lighthouse once again this year. The tours will be offered on two Saturdays: May 30 and September 12. On both of these dates we will run two tours, the first from 9:00a.m. to 11:00a.m., and the second from 12:00p.m. to 2:00p.m.

In order to participate, you must be a current member. If you have a family membership, please note that all participating family members must reside in the same household. We must also insist that no children under the age of six are allowed to go because of safety concerns. Our lighthouse is not handicap-accessible due to uneven terrain and many stairs, so please take that into consideration when planning to go. No smoking is permitted anywhere on the island and no food or drink is permitted inside the lighthouse. If you do bring any snacks, there is a carry-in, carry-out policy, so please be prepared to take your trash with you.

All participants will be boarding the brand-new *Lady Pomham II* at Al's Waterfront Restaurant in East Providence. A twenty-minute boat ride will

take you to the island where you will take a tour of our completely restored 1871 lighthouse and learn the history of the lighthouses of upper Narragansett Bay.

Space is limited! If you are interested, please send an email to [judianne@protonmail.com](mailto:judianne@protonmail.com) to make a reservation. Upon receipt of your email, you will receive a confirmation email with more detailed information.

### **WORK PARTIES**

The time is once upon us to gather up volunteers to maintain the grounds at the lighthouse. All those interested in work parties should check off their indication of interest when submitting their membership applications. Those that do so will be receiving a schedule of dates so they can plan ahead. A brief meeting will be held to review projects at the lighthouse prior to the start of the work party season. If you would like to join work parties and did not check off the box on the membership application, please contact us stating you would like to sign up for work parties at [pomhamrockslighthouse@yahoo.com](mailto:pomhamrockslighthouse@yahoo.com).

### **2020 SCHEDULE FOR SAVE THE BAY TOURS**

Save The Bay has announced their schedule for the upcoming summer season. They have decided to limit the tours this year to six Ultimate Tours (day long tours of all the lighthouses in Narragansett Bay). This year the tours will include visits to

Pomham Rocks as well as Rose Island where the visit will include a bag lunch. The cost is \$100.00. The tours will leave from the Save The Bay Campus in Providence at 9:00a.m. and return at 4:30p.m. The dates are: 6/27, 7/25, 8/22, 9/13, 9/27 & 10/10.

Dave Kelleher will be the narrator again this year for these tours and for this, Save The Bay will donate 10% of the profits to FPRL. There will also be a \$5.00 landing fee for each person for the visit to Pomham. So, if any of our members would like a day on beautiful Narragansett Bay with Save The Bay, please realize that part of your ticket cost will go to our continuing restoration efforts.

A schedule for two visits for campers who attend the Save The Bay Summer Camps will be 7/27 & 8/10 from 12:00p.m. to 2:00p.m. Two docents from FPRL will travel to the lighthouse on a Save The Bay boat to conduct a tour and do lighthouse activities with the campers. These visits are fun and who knows, some of these youngsters may be future members of FPRL. Save The Bay will pay \$5.00 per child for these visits.

### MEMORIAL DAY PARADE

Once again, FPRL will be represented in the Riverside Memorial Day Parade. There will be space for some volunteers to help distribute lollipops or walk along with the boat. We also need two people to help carry our banner. Everyone is welcome to participate, just make sure to wear a Pomham shirt or a red colored shirt if you plan on participating. The Parade is Monday, May 25<sup>th</sup>, and

will begin at 10:00a.m. from the Carousel in Riverside. The parade usually lasts about an hour, and we would recommend showing up at least half an hour early to get organized.



*Memorial Day 2009*

### LIGHTHOUSE MUSEUM

The museum committee has been hard at work this winter transforming the interior of the lighthouse into a class act museum. They started off by meticulously planning each room out down to the exact placing of pictures and display cases. The group is currently in the process of installing foam board displays for each room. In addition to that, they are acquiring United States Lighthouse Service artifacts to display for visitors to learn about. The museum will be featuring a trove of vintage pictures from the Pomham Rocks lighthouse and other former lighthouses on the Providence River.



The museum is on track to be completed by May 2020, just in time for the first round of tours. Stay tuned for the completed project in the next newsletter!

### CALL FOR NEW CAPTAINS & FIRST MATES

The Friends of Pomham Rocks Lighthouse are currently looking for new volunteer crew members to run the brand-new boat: The Lady Pomham II. A typical crew for a trip consists of one captain and one first mate. Our organization is currently running with three captains, and one first mate. Now that public tours are a go, and work parties are still needed, we need more hands to fulfil a busy schedule for the upcoming season. If you have a captains license, any boating experience, or would like to learn how to become a first mate or captain, please contact us at [pomhamrockslighthouse@yahoo.com](mailto:pomhamrockslighthouse@yahoo.com).

### POMHAM SANTA

Pomham Santa, sponsored by the Friends of Pomham Rocks Lighthouse, made his annual run to Sabin Point in the Lady Pomham on a cold and blustery day last November. Andy Leddy, who was Santa, was accompanied by Captain Alex Dias, First Mate Dennis Tardiff, and “Elf” David Kelleher on the Lady Pomham.

The launch cruised from Bullocks Cove along the Riverside shoreline to Sabin Point, while families waved from their decks and yards as they went by. At Sabin Point, Santa was warmly greeted by a large crowd of waving and cheering children and families. Among the crowd was Laura McNamara of the East Providence Chamber of Commerce along with mascot Biz-E-Dawg.

Santa wished everyone a “Merry Christmas” on his bullhorn as he cruised back and forth along the shore. The crowd kept warm by sipping hot chocolate and eating Munchkins, kindly donated by Pawtucket Avenue Dunkin’ Donuts and served by Pomham Events volunteers. A lovely ornament featuring Santa on the roof of the lighthouse was for sale as well, a memento of Santa’s visit to our shore.



### ANNUAL MEETING

The Annual Meeting was held at the Rhode Island Yacht Club on November 17, 2019. About 72 members attended this event across the bay from Pomham Rocks Lighthouse, which can be seen on a clear day.

During the first half hour, the business meeting was chaired by Chairman Dennis Tardiff. Introductions were made and the Board Members gave reports. The Election of Officers for 2020 followed, with Judianne Point added as a new Board Member.

Dave Tessitore, Commodore of the RIYC, welcomed everyone, saying he looked forward to our continuing relationship. The Friends have hosted the RIYC Members for a picnic on the island for the past three years, and in return the yacht club has generously waived its fee for the use of its hall for this event.

Mary Chace, an Events Committee co-chair, made the arrangements for this event and thanked the Club for its continued hospitality. The speeches were followed by an engaging slide show of 2019 events, museum additions, and building & grounds improvements prepared by member, Jim Joiner. Louise Paiva, our tireless volunteer, announced that there were raffles, an auction, and merchandise for sale, which would continue throughout the meal. She reminded the audience that the money earned would be used for the maintenance of the lighthouse.

An excellent dinner, catered by Revolution, followed the meeting and was enjoyed by everyone.

### 2020 MEMBERSHIP DUES

2020 Membership Dues letters were mailed out on January 7<sup>th</sup>. Please renew your membership with Pomham Rocks Lighthouse. Membership dues will be due April 1<sup>st</sup>. Your continuing support enables us to maintain and preserve our beautifully restored lighthouse. Thank you!

Membership Levels are as follows:

#### **Assistant Keeper (Full time Student)**

\$15.00

#### **Individual Membership**

\$30.00

#### **Family Membership**

(Those living under same roof) \$50

#### **Lighthouse Inspector**

\$100.00

#### **Lighthouse Superintendent**

\$250.00

#### **Corporate Membership**

\$250.00

#### **Commissioner of Lighthouses**

\$500.00

Mailing address:

P.O. Box 15121

Riverside, Rhode Island 02915

*\*Please make checks payable to Friends of Pomham Rocks Lighthouse\**

# UPCOMING 2020 EVENTS

## **May 25<sup>th</sup>: Memorial Day Parade**

Location: Crescent Park Carousel

Time: Gather around 9:30 a.m.

## **June 7<sup>th</sup>: Summer Picnic & Christening Ceremony**

More details to follow!

## **August 8<sup>th</sup>: Loeff Arts Festival**

Location: Crescent Park

---

**FOLLOW THE RESTORATION WORK @**

[www.pomhamrockslighthouse.org](http://www.pomhamrockslighthouse.org)

Facebook: Pomham Rocks Lighthouse

YouTube: Pomham Rocks Lighthouse

Instagram: @pomham\_rocks\_lighthouse

