

JOURNAL of Light-house Station at *Poham Rock Light July, first*

1887.
MONTH.

DAY.

RECORD OF IMPORTANT EVENTS AT THE STATION, BAD WEATHER, &c.

July ...

1	Clear wind, S.W. light & very warm
2	Clear wind, S.W. fresh
3	Clear wind W.S.W. light
4	Partly cloudy, W.S.W. Strong
5	Partly cloudy wind, S.W. fresh
6	Cloudy wind, S.W. Strong & Showery
7	Clear wind, W.S.W. fresh
8	Partly cloudy wind, S.W. light
9	Cloudy wind, S.E. fresh
10	Cloudy wind, S.W. strong at 4 P.M. had
11	Cloudy wind, N.N.W. Strong & Showery
12	Partly cloudy wind, S.S.E. fresh
13	Clear wind, N.N.W. light & hot
14	Clear wind, N.W. fresh
15	Partly cloudy wind, N.N.W. fresh
16	Cloudy wind, S.B.E. light & at 4.
17	Cloudy wind, S.E. light & raining at
18	Cloudy wind, S.E. light & raining
19	Cloudy wind, S.E. light at 3 P.M. clear
20	Clear wind, S.W. fresh
21	Cloudy wind, S.E. light
22	Cloudy wind, S.S.W. Strong
23	Cloudy wind, S.W. fresh
24	Cloudy wind, S.W. fresh &
25	Clear wind, S.W. moderate
26	Clear wind light at 4 P.M. had
27	Clear wind, N.E. light, at 2 P.M. had to
28	Clear wind, S.W. light
29	Partly cloudy wind, S.W. light
30	Partly cloudy wind, S.S.E. fresh
31	Cloudy wind, S.S.W. light, with

To N.W. on

12 in the

P.M. clear of
2 P.M. clear

of wind had

& raining
Showery

To S.W. & S.
S.W. fresh, W.

Heavy the

To N.W. and rain

MR in the Shade

P.M. clears off
2. P.M. heavy thunder & lightning
of wind falls to S.W. light

& raining
Showery

To S.W. & Showery
S.W. fresh, W. S. misty stop her to day

Heavy thunder & lightning & rain

JOURNAL of Light-house Station at Sunnham, Rock, Light August 1 1887

1887.
MONTH.

DAY.

RECORD OF IMPORTANT EVENTS AT THE STATION, BAD WEATHER, &c.

August

- 1 Thick haze weather, S, S, W light verre hot day
- 2 Cloudy wind, N, E. light & raoney day
- 3 Partley cloudy wind, N, E. light
- 4 Clear wind, S, W, light
- 5 Partley cloudy wind, S, S, E. modrate
- 6 Cloudy, N, E. light, heavy thunder
- 7 Clear wind, N, W, fresh
- 8 Clear wind, S, W, light
- 9 Clear wind, S, W, light
- 10 Partley cloudy wind, W, S, W, light
- 11 Cloudy wind, S, W, light heavy thunder
- 12 Clear wind, N, W, light
- 13 Clear wind, N, W, light
- 14 Clear wind, N, W, light
- 15 Partley cloudy wind, W, S, W, fresh
- 16 Clear wind, S, W, light
- 17 Thick smokey weather wind, S, S, E. light
- 18 Cloudy wind, S, E. strong at, 2, P.M. had to, W, S, heavy
- 19 Clear wind, S, W, fresh
- 20 Cloudy wind, N, E. light & Carpenters left
- 21 Clear wind, N, E. light, at, 3, 30. had to, S, W, light
- 22 Cloudy wind, S, W, light, with heavy
- 23 Cloudy wind, N, N, W, light, & Showrey
- 24 Cloudy wind, N, E. light & raining at day
- 25 Clear wind, N, N, W, light
- 26 Partley cloudy wind, N, N, W, fresh
- 27 Clear wind, N, W, light
- 28 Clear wind, N, E. light
- 29 Clear wind, N, E. light
- 30 Cloudy wind, Varying all round the compass, at one, P.M
- 31 Clear wind, N, E. light

Inspected 2nd & found in place at
H. K. Belkham
Grounds & Suspension

& rain

Carpenters come to Day 2 of them
& lightning & Rain, commence to shingle store house

With thunder & rain

This morning for Bullocks Point

Rain & thunder

With thunder & lightning

Away thunder & lightning & rain, Supply Boat stop her to & left supplies

1887

JOURNAL of Light-house Station at *Pernham Rock Light* Sept. 1st

1887.
MONTH.

DAY.

RECORD OF IMPORTANT EVENTS AT THE STATION, BAD WEATHER, &c.

- 1 Clear Wind, S.W., light
- 2 Cloudy wind, S.W., Strong, left 25. Barob
- 3 Clear wind, N.W., fresh U.S.S. miston
- 4 Clear wind, N.E., light,
- 5 Clear wind, S.W., Moderate
- 6 Cloudy wind, W.S.W., fresh
- 7 Cloudy wind, S.W., Strong & heavy
- 8 Clear wind, N.W., fresh
- 9 Partley Cloudy wind, S. By E., fresh
- 10 Clear wind, N.W., light
- 11 Partley Cloudy wind, N.E., light
- 12 Cloudy wind, N.E., light & raining
- 13 Cloudy wind, N.E., light
- 14 Cloudy & thick fog till 11 am, wind S.W.
- 15 Clear wind, N.W., light
- 16 Clear wind, N.E., fresh
- 17 Clear wind, N.E., light & at 4.30 P.M.
- 18 Clear wind, S.W., light
- 19 Clear wind, W.S.W., fresh
- 20 Clear wind, N.W., light
- 21 Thick Smokey weather wind, S.W., fresh
- 22 Cloudy wind, N.W., light
- 23 Cloudy wind, N.E., light
- 24 Partley Cloudy wind, N.E., fresh
- 25 Partley Cloudy wind, N.W., light
- 26 Thick Smokey weather wind, W.B. South
- 27 Partley Cloudy wind, S.W., light
- 28 Cloudy wind, S.W., light
- 29 Cloudy wind, S.W., light
- 30 Cloudy wind, S.W., light

Leant

3 Sept Station in good order - left 25 bbls cement for repairs
to be made at Sarrafrae + Fisher Rock beaver. D. P. Keap. Regd 3 Dist

Thunder & Lightning & rain in torrents

Light

Went to "S.W. light

Light

- 1 Cloudy wind, S, E, light & Showery
- 2 Cloudy wind, S, E, light & rainey
- 3 Cloudy wind, S, S, E, light, & Showery
- 4 Cloudy wind, S, S, E, Strong
- 5 Partly cloudy wind, S, E, light, last night
- 6 Clear wind, N, N, W, light
- 7 Clear wind, W, N, W, fresh
- 8 Clear wind, S, E, light
- 9 Cloudy wind, S, E, light
- 10 Partly cloudy wind, S, S, E, light
- 11 Cloudy wind, N, E, moderate
- 12 Partly cloudy wind, N, W, fresh
- 13 Clear wind, S, W, Blowing Gale
- 14 Partly cloudy wind, N, N, W, light
- 15 Clear wind, N, E, light
- 16 Clear wind, S, W, fresh
- 17 Clear wind, S, W, moderate
- 18 Partly cloudy wind, S, W, light
- 19 Clear wind, N, E, light
- 20 Cloudy wind, S, E, light
- 21 Cloudy wind, N, E, Strong, 4 P.M. hails to
- 22 Clear wind, N, W, Strong
- 23 Clear wind, W, S, W, light
- 24 Partly cloudy wind, S, W, very strong
- 25 Cloudy wind, W, S, W, light
- 26 Partly cloudy wind, S, E, light
- 27 Cloudy wind, N, E, light
- 28 Cloudy wind, N, E, light
- 29 Clear wind, S, W, light
- 30 Partly cloudy wind, N, E, light
- 31 Clear wind, N, N, W, light, first ice

And, a thick fog & rainy Day

We had heavy thunder Storm with lightning & rain

Received five tons lode from U & Steamer-Lactus

A. W. & clears up.

This morning

JOURNAL of Light-house Station at *Punham Rock Nov 1, 1887*

1887.
MONTH. *Nov*

DAY.

RECORD OF IMPORTANT EVENTS AT THE STATION, BAD WEATHER, &c.

- 1 Partly cloudy wind, N. E. Strong
- 2 Clear wind, S. W. Light
- 3 Clear wind, S. E. overcast light
- 4 Partly cloudy wind, S. W. Strong
- 5 Clear wind, N. W. Strong
- 6 Clear wind, S. W. fresh
- 7 Thick smoky weather wind, S. W. fresh
- 8 Thick smoky day wind, N. N. W. light
- 9 Clear wind S. W. light
- 10 Clear wind, S. W. light, at 4 P.M. had to S. E.
- 11 Partly cloudy wind, W. N. W. Strong
- 12 Cloudy wind, S. W. Strong
- 13 Clear wind, N. W. fresh
- 14 Partly cloudy wind, S. W. light
- 15 Cloudy wind, N. N. W. Strong & rainey
- 16 Partly cloudy wind, N. W. strong
- 17 Partly cloudy wind, N. W. light
- 18 Clear wind, N. W. fresh
- 19 Cloudy wind, N. E. light & rainey
- 20 Cloudy wind, S. W. light & rainey
- 21 Clear wind, N. W. light
- 22 Clear & calm till 4 P.M. then light breeze
- 23 Clear wind, S. W. Light & at 4. Commence
- 24 Cloudy wind, N. E. light & foggy
- 25 Thick foggy wind, N. N. W. light
- 26 Foggy till 10 A.M. & then clears off wind, S. W. light
- 27 Foggy till 10:30 A.M. & then clears off wind, S. W. light
- 28 Cloudy wind, S. W. Strong & rainey
- 29 Clear wind, N. N. W. fresh
- 30 Clear wind, N. E. Strong

Strong & Rain

Spring up from S.C.
To closed up

1887.
MONTH.

DAY.

RECORD OF IMPORTANT EVENTS AT THE STATION, BAD WEATHER, &c.

- 1 Clear wind, N. E. fresh & cold, 8, Above
- 2 Cloudy wind, N. N. E. light
- 3 Foggy all day & calm with Showery
- 4 Cloudy wind, S. E. very light
- 5 Cloudy wind, S. E. light, 3, held to, N. W. fresh
- 6 Clear wind, N. W. light
- 7 Clear wind, S. S. E. light, at 1, P. M. Clouds up
- 8 Cloudy wind very light from N. E. calm
- 9 Cloudy wind, S. E. light
- 10 Cloudy wind, S. S. E. light
- 11 Cloudy & thick fog all day wind, S. S. E. light
- 12 Partly cloudy wind, N. W. light
- 13 Clear wind, N. W. light, & S. Catar. stop to day
- 14 Clear wind, S. S. E. light
- 15 Cloudy & thick fog & raining wind, S. E. light
- 16 Clear wind, N. W. Strong blowing heavy
- 17 Cloudy wind, N. W. light
- 18 Cloudy wind, N. W. Strong & light rains & Snow
- 19 Clear wind, N. W. fresh, Snow some last night
- 20 Partly cloudy wind, S. W. light
- 21 Cloudy wind, N. W. light & rainey
- 22 Clear wind, N. W. Strong, Blowing heavy
- 23 Clear wind, N. W. fresh
- 24 Clear wind, N. W. very light air & pleasant day
- 25 Cloudy wind, N. W. light with snow speals
- 26 Cloudy wind, N. E. light
- 27 Partly cloudy wind, N. W. light, at 10, A. M. Clear
- 28 Cloudy wind, S. E. Blowing gale & raining hard
- 29 Partly cloudy wind, W. S. W. Strong
- 30 Partly cloudy wind, N. W. Strong, cold, 6, Above
- 31 Cloudy wind, N. W. light, River froze last night

And rain verrey heavy rain storme last night

13: Dec - sundown Mr. Macleod's Co

Was light

Off snow storme last night

Over

Up

Down to zero

& rain

Snow storme last night

River froze over from shore to shore
River still froze over

Low zero river froze over, for three days
& verrey cold

River closed by ice

2, Below & verrey cold the river closed up

" Heavy Blow last night & Snow

Down to zero, river blocke off with ice

Verrey cold

New York Steam Boat stuck in the ice & cant brake throu

JOURNAL of Light-house Station at Pumpham Rock Jan. 1, 1888

1888.
MONTH.

DAY.

RECORD OF IMPORTANT EVENTS AT THE STATION, BAD WEATHER, &c.

- 1 Cloudy Wind S.E. Strong & heavy & rain all day
- 2 Clear wind N.W. fresh
- 3 Clear wind N.W. Strong, river froze
- 4 Cloudy wind N.W. light, River still froze over
- 5 Clear wind N.N.E. Strong, river Breaking
- 6 Partly Cloudy wind S.W. light
- 7 Cloudy wind W. S.W. light & foggy
- 8 Cloudy wind N.E. light & foggy
- 9 Cloudy wind N.W. light
- 10 Cloudy wind N.N.W. light, snow storm
- 11 Clear wind N.W. strong
- 12 Clear wind N.W. fresh, & very cold thermometer
- 13 Cloudy wind S.E. fresh, & heavy snow storm
- 14 Clear wind N.E. light, river full drift ice
- 15 Cloudy light air from N.W. & foggy all day
- 16 Partly Cloudy wind N.E. strong
- 17 Cloudy wind S.E. light & snowing
- 18 Partly Cloudy wind N.W. strong
- 19 Clear wind N.W. fresh
- 20 Clear wind W.N.W. fresh & cold, 6, above
- 21 Clear wind N.W. fresh & cold, 8, above
- 22 Clear wind N.W. light, & cold this morning, 6, Below
- 23 Partly Cloudy wind N.W. light, 3, Below
- 24 Clear wind N.W. strong & very cold, 9 above
- 25 Partly Cloudy wind N.W. light, cold thermometer
- 26 Partly Cloudy wind N.W. strong & cold
- 27 Clear wind N.W. strong & very cold
- 28 Clear wind N.W. fresh & thermometer, 9, Below &
- 29 Clear wind N.W. light the thermometer, 10, Below
- 30 Partly Cloudy wind W. S.W. light & cold
- 31 Clear wind N.W. light & pleasant

Over

Up

Down to zero

& rain

Snow storme last night

River froze over from shore to shore

River still froze over

Low zero river froze over, for three days
& verrey cold

River closed by ice

2, Below & verrey cold the river closed up

" Heavy Blow last night & Snow

Down to zero, river blocke dde with ice

Verrey cold

New York Steam Boat stuck in the ice & cant brake thru

JOURNAL of Light-house Station at Pumpham Rock Feb. 1, 1888

1888.
MONTH.

DAY.

RECORD OF IMPORTANT EVENTS AT THE STATION, BAD WEATHER, &c.

- 1 Clear wind, N. N. W. light river still
- 2 Clear wind, N. W. fresh froze over
- 3 Clear wind, N. W. light froze over
- 4 Cloudy wind, S. E. light & snowing, froze over
- 5 Clear wind N. W. light & rain & snow last
- 6 Clear wind, N. N. W. light still froze over
- 7 Partly cloudy wind N. E. light, River full drift
- 8 Cloudy wind, S. E. light & rainy day
- 9 Clear wind, N. W. fresh river full ice
- 10 Cloudy wind, E. S. E. light river full drift,
- 11 Cloudy wind, N. E. fresh, with snow & rain
- 12 Clear wind, N. E. light & pleasant
- 13 Clear wind, S. W. light, River full of drift ice
- 14 Clear wind, S. W. light, & river full of drift ice
- 15 Clear wind, N. W. strong
- 16 Clear wind, N. W. light & cold theater at sun
- 17 Cloudy wind, N. N. W. fresh, river still closed
- 18 Partly cloudy wind light from, N. W.
- 19 Clear wind, N. E. light
- 20 Cloudy wind, S. W. strong & raining
- 21 Partly cloudy wind, N. N. W. light
- 22 Clear wind, N. W. light & pleasant day
- 23 Clear wind, S. W. fresh
- 24 Inspected Station. In good order
- 25 Cloudy wind, S. E. strong, *Act Rodgers*
- 26 Cloudy wind S. W. light, *Command'r Insk*
- 27 Cloudy wind, N. W. light
- 28 Clear wind, N. W. strong & cold 14, above
- 29 Clear wind, N. W. light, River
- ~~30~~
- ~~31~~

Provid

Inspector

Froze over

Night

Ice

River full of drift ice & thick fog

Rise, & Below & last night river froze over shore to shore
With ice

Clear wind, N. W. light, U. S. Cactus her to day
Raining & Snow
& showrey

Froze over last night

JOURNAL of Light-house Station at *Punham Roik, March, 1888*

1888
MONTH.

DAY.

RECORD OF IMPORTANT EVENTS AT THE STATION, BAD WEATHER, &c.

March

- 1 Partly Cloudy wind N.W. light
- 2 Cloudy wind, N.E. light, light Snow last night
- 3 Clear wind, N.W. Strong
- 4 Clear wind, N.W. strong
- 5 Cloudy wind N.W. fresh
- 6 Clear wind, N.W. fresh, cold
- 7 Clear wind, N.W. Strong, cold
- 8 Clear wind, N.W. Strong
- 9 Partly Cloudy wind, N.E. light
- 10 Clear wind, N.E. light
- 11 Cloudy wind, S.E. fresh & gale commence
- 12 Cloudy wind, N.E. Strong, with snow & rain & hail
- 13 Cloudy wind, S.E. strong, & thick weather with snow
- 14 Cloudy wind, N.E. strong with snow squalls
- 15 Clear wind, N.W. light
- 16 Cloudy wind, S.W. light
- 17 Clear wind, N.W. fresh
- 18 Clear wind, N.W. fresh & cold
- 19 Clear wind, S.W. light
- 20 Cloudy wind, S.W. Strong
- 21 Cloudy wind, S.E. very Strong
- 22 Partly Cloudy wind, N.W. light
- 23 Partly Cloudy wind, N.W. Strong
- 24 Clear wind, N.W. Strong & cold
- 25 Partly Cloudy wind, S.E. light very
- 26 Cloudy wind, S.E. fresh & with rain & hail
- 27 Cloudy wind, N.E. light
- 28 Partly Cloudy wind, S.E. light
- 29 Cloudy wind, N.W. fresh, thick fog till
- 30 Clear wind, N.W. fresh
- 31 Clear wind, N.W. Strong

With hale snow & rain
Very heavy gale with Snow rain & hale
Which lasted three days

And ran all day

Gale

Cold river froze over last night, U. S. I. grass Darling left
Paints & Blocks

Ten & lites up

1888.
MONTH.

DAY.

RECORD OF IMPORTANT EVENTS AT THE STATION, BAD WEATHER, &c.

DAY.	RECORD OF IMPORTANT EVENTS AT THE STATION, BAD WEATHER, &c.
1	Partly cloudy wind, S.W. fresh
2	Partly cloudy wind, N.W. fresh
3	Partly cloudy wind, N.N.W. fresh
4	Clear wind, S.W. Strong
5	Cloudy wind, S.S.E. high & raining
6	Clear wind, N.W. Strong, Heavy rain & thunder
7	Clear wind, N.W. Strong gale
8	Clear wind, N.W. fresh
9	Clear wind, N.N.W. light, commenced
10	Cloudy wind, S.W. fresh with rain
11	Partly cloudy wind, N.N.W. strong
12	Partly cloudy wind, S.W. Strong
13	Clear wind, S.W. fresh.
14	Cloudy wind, N.W. cold & fresh & Rainy
15	Partly cloudy wind, S.W. light
16	Partly cloudy wind, N.N.E. light
17	Clear wind, S.E. light
18	Cloudy wind, S.W. fresh & showery
19	Clear wind, S.W. Strong
20	Cloudy wind, S.S.E. light & rainy day
21	Partly cloudy wind, N.W. strong
22	Partly cloudy wind, N.W. fresh
23	Cloudy wind, S.W. light
24	Cloudy wind, N.N.W. light with snow squalls
25	Clear wind, S.S.E. light
26	Clear wind, S.S.W. light
27	Clear wind, E, N.E. light & pleasant
28	Clear wind, S.S.E. light
29	Clear wind, S.W. light
30	Clear wind, N.E. light

& Lightning

Painting Roofs to Day

Heavy rain Storme last night

1888
MONTH.

DAY.

RECORD OF IMPORTANT EVENTS AT THE STATION, BAD WEATHER, &c.

- 1 Cloudy wind, N.E. light & raining
- 2 Cloudy wind, N.E. light & lube day
- 3 Clear wind, S.W. light
- 4 Cloudy wind, S.W. Strong
- 5 Clear wind, S.S.E. light
- 6 Clear wind, S.S.E. at 4 P.M. had to S.W. fresh
- 7 Partley cloudy wind, N.W. fresh
- 8 Cloudy wind, S.W. fresh & Showery
- 9 Cloudy wind, S.E. light & thick fog till 10
- 10 Cloudy wind, S.E. light thick fog till 10 A.M.
- 11 Cloudy wind, N.E. light & thick fog
- 12 Inspected station, in good order. Deep Imp. & dirt-
- 13 Partley cloudy wind, N.E. light
- 14 Partley cloudy wind, N.E. light
- 15 Cloudy wind, N.E. light & Showery
- 16 Cloudy wind, S.W. Strong & Showery
- 17 Clear wind, N.W. Strong & lube day
- 18 Cloudy wind, W.S.W. light & rainey
- 19 Cloudy wind, N.E. light & raining
- 20 Clear wind, N.W. moderate
- 21 Clear wind, S.E. light
- 22 Clear wind, S.S.W. fresh
- 23 Cloudy wind, S.S.E. light
- 24 Cloudy wind, E.S.E. light & rainey
- 25 Cloudy wind, E.N.E. fresh
- 26 Cloudy wind, N.E. light & fogey & rain
- 27 Partley cloudy wind, E.S.E. light
- 28
- 29 Cloudy wind, S.E. light
- 30 Clear wind, W.S.W. light Steamer Coates 3/4 to day
- 31 Partley cloudy wind, W.S.W. light

Mistletoe

Prud

All Day
Further cloudy wind, S, S, E, fresh & left, 5, gallons oil

Inspected Station - In good order. ^{Sub} Flattop
And left half Barrel lime & two quarts spirits turpentine
Heavy rain last night

1888.
MONTH.

DAY.

RECORD OF IMPORTANT EVENTS AT THE STATION, BAD WEATHER, &c.

June

- 1 Cloudy wind, S, S, E light & raining
- 2 Partly cloudy wind, N, W fresh
- 3 Clear wind, S, S, E. fresh Breeze
- 4 Clear wind, S, S, E, fresh at 2, P.M. had to, N, E fresh
- 5 Clear wind, S, W fresh Breeze
- 6 Clear wind, W, S, W light
- 7 Clear wind, S, W Strong
- 8 Clear wind, N, W, light, some wood ball it came
- 9 Clear wind N, E fresh
- 10 Clear wind, S, W, fresh
- 11 Cloudy wind, S, E fresh
- 12 Clear wind, S, W, strong
- 13 Clear wind, S, W, strong
- 14 Clear wind, S, W fresh & rainy
- 15 Partly cloudy wind, S, E, light & foggy
- 16 Clear wind, N, W, light
- 17 Clear wind, S, S, W, light
- 18 Partly cloudy wind, S, S, E, light
- 19 Clear wind, S, W, light
- 20 Partly cloudy wind, N, E, light & Showery
- 21 Partly cloudy wind, S, W, light & Showery
- 22 Cloudy wind, S, E, light & at 2, P.M. had to, S, W, fresh
- 23 Clear wind, S, W, fresh very hot
- 24 Cloudy wind, N, E, light
- 25 Clear wind, S, E, light
- 26 Cloudy wind, S, S, W, light & rainy
- 27 Clear wind, N, N, E, fresh u s Steam
- 28 Cloudy wind, E, S, E, light But lile
- 29 Clear wind, N, E, light
- 30

Heavy Thunder last & rain

ne 22 John Beadler & mason took, 3, Barrels. Lement for subers
Light

stop her to day & repair Storme Door

JOURNAL of Light-house Station at *Bumham Rock July 1 1888*

1888.
MONTH.

DAY.

RECORD OF IMPORTANT EVENTS AT THE STATION, BAD WEATHER, &c.

July, 1.

*Cloudy wind
S.W. fresh*

- 1 Partly cloudy wind, N. E. Strong & cold
- 2 Clear wind, N. E. Strong
- 3 Clear wind, S. S. E. fresh
- 4 Clear wind, W. S. W. Strong
- 5 Station in vice order, James D.
- 6 Clear wind, N. W. light
- 7 Clear wind, N. W. Strong
- 8 Clear wind, N. N. W. light
- 9 Cloudy wind, S. W. light & showery
- 10 Clear wind N. E. & 2 P.M. hald to
- 11 Clear wind, S. W. Strong
- 12 Partly cloudy wind, N. W. Strong, heavy gale lost
- 13 Partly cloudy wind, N. N. W. fresh
- 14 Clear wind, S. S. W. fresh
- 15 Clear wind, S. S. E. light
- 16 Clear wind, N. E. light
- 17 Clear wind, S. E. fresh
- 18 Partly cloudy wind, S. S. E. fresh
- 19 Cloudy wind, S. W. Strong
- 20 Cloudy wind, W. S. W. fresh
- 21 Thick haze wind, S. S. E. light
- 22 Cloudy wind, N. E. light at 4 P.M. hald to, S. W.
- 23 Clear wind, S. W. fresh
- 24 Clear wind, S. W. light
- 25 Clear wind, N. W. light at 3 P.M. hald to
- 26 Clear wind, S. S. E. fresh
- 27 Cloudy wind N. E. & raining
- 28 Partly cloudy wind, N. E. Strong
- 29 Partly cloudy wind, N. E. light at 3 P.M. hald
- 30 Clear wind, S. W. fresh
- 31 Cloudy wind, S. W. Strong

Day for this time of the season

Ysgong. Engineer Secretary L. H. Board.
W. D. Heap. Insp 3 Dist
Edw. L. Woodruff. Asst. Supt.

S.E. light

Night with thunder & rain which made the shake bad for some time

Light Rained All Day

L. W. Strong

To S.W. moderate

JOURNAL of Light-house Station at Pamham Rock August. 1, 1888

188 & MONTH.	DAY.	RECORD OF IMPORTANT EVENTS AT THE STATION, BAD WEATHER, &c.
August	1	Clear wind, S.W. light
	2	Clear calm till 2 P.M. then the wind, S.W. light
	3	Thick Smokey weather Wind, S.W. fresh
	4	Cloudy wind, S.S.E., fresh
	5	Cloudy wind, S.S.E. light
	6	Cloudy wind, N.E. light & raining
	7	Cloudy wind, N.E. light
	8	Cloudy wind, S.S.E. fresh
	9	Clear wind, S.W. light
	10	Clear wind, S.W. light
	11	Clear wind from, N.E. to, S.W. light
	12	Clear wind, S.W. light at, 4 P.M. had
	13	Cloudy wind, S.W. Strong & heavy rain at
	14	Clear wind, N.W. Strong
	15	Clear wind, N.W. fresh
	16	Clear wind, W.N.W. fresh, at 5 P.M. had to
	17	Cloudy wind, S.S.E. light, at 3 P.M. Comes
	18	Partly Cloudy wind, W.N.W. light
	19	Clear wind, W.N.W. light
	20	Clear wind, N.W. light
	21	U. S. S. fare start to day & let Supplies & wind, S.E.
	22	Clear wind, N.W. fresh
	23	Clear wind, N.W. light
	24	Clear wind, W.S.W. fresh
	25	Clear wind, W.S.W. light
	26	Clear wind, S.W. fresh
	27	Cloudy wind, N.W. light at, 10 A.M.
	28	Partly Cloudy wind, N.N.W. Strong, Boat up got to day.
	29	Clear wind, W.S.W. fresh
	30	Clear wind, S.W. fresh
	31	Partly Cloudy wind, S.S.E. fresh

to, N.E. light

3, P.M. bears of wind falls to, N.W. strong.

S.E. light

ce to thunder & lightning & rain

fresh & rainy all day

commence to rain with thunder & lightning

JOURNAL of Light-house Station at *Punham Rock, Sept. 1, 1888*

1888.
MONTH. *Sept* DAY.

RECORD OF IMPORTANT EVENTS AT THE STATION, BAD WEATHER, &c.

Sept

- 1 Cloudy wind, S, W, fresh & rainey
- 2 Clear wind, N, W, light & fine day
- 3 Partley cloudy wind, S, S, E, light
- 4 Partley cloudy wind, E, S, E, light & rainey
- 5 Clear wind, N, N, E, light
- 6 Partley cloudy wind, S, E, light
- 7 Partley cloudy wind, E, S, E, light
- 8 Cloudy wind, S, W, Strong Commodore *Wai her*
- 9 Cloudy wind, S, W, light & rainey by showers
- 10 Cloudy wind, E, S, E, light
- 11 Partley cloudy wind, N, N, W, light, at 4 P
- 12 Partley cloudy wind, S, W, light, at 2 P, M
- 13 Clear wind W, S, W, light
- 14 Clear wind, S, S, E, light
- 15 Cloudy wind, S, E, Strong
- 16 Cloudy wind, S, E, Light & rainey
- 17 Cloudy wind, N, E, fresh & rainey
- 18 Cloudy wind, N, E, light
- 19 Cloudy wind, S, S, E, fresh
- 20 Cloudy wind, N, E, light & thick rainey
- 21 Cloudy wind, N, E, light
- 22 Cloudy wind, N, light & Rainey
- 23 Clear wind, N, E, fresh
- 24 Cloudy wind, N, E, light thick fog
- 25 Cloudy wind, N, E, Strong at 3 P, Made to
- 26 Partley cloudy wind, W, S, W, light
- 27 Partley cloudy wind, N, W, light
- 28 Clear wind, N, W, light
- 29 Partley cloudy wind, N, W, light

6th Sep. Good news Alhla coyn. Sea

At hand to, S, W, light & clears off
At hand to, N, W, fresh

Delivered 15 Barrels Permint
weather with thunder & lightning

This morning
N, W, strong & clears up &

1888.
MONTH.

DAY.

RECORD OF IMPORTANT EVENTS AT THE STATION, BAD WEATHER, &c.

Oct

- 1 Cloudy wind, S. E. light & rainy day
- 2 Partly cloudy wind, S. W. light
- 3 Partly cloudy wind, N. W. fresh
- 4 Clear wind, W. S. W. light
- 5 Clear wind, S. W. Strong
- 6 Cloudy wind, S. W. light & rainy day
- 7 Cloudy wind, N. W. Light & raining
- 8 Clear wind, N. W. Strong cold
- 9 Partly cloudy wind, N. W. Strong
- 10 Partly cloudy wind, N. N. W. light
- 11 Partly cloudy wind, S. W. light
- 12 Cloudy wind, N. E. light, & fog & raining
- 13 Partly cloudy wind, N. N. W. light
- 14 Cloudy wind, N. N. E. light & cold
- 15 Clear wind, S. W. light & very fine day
- 16 Cloudy wind, S. W. Strong & Rainy
- 17 Cloudy wind, S. W. light & received five
one 2 Blow
- 18 Clear wind, N. N. W. strong
- 19 Cloudy wind, S. W. light
- 20 Clear wind, N. W. Light, heavy sun
- 21 Clear wind, N. W. strong
- 22 Clear wind, N. W. light
- 23 Cloudy wind, S. W. light & Showery
- 24 Partly cloudy wind, N. N. W. fresh & heavy
- 25 Clear wind, N. N. E.
- 26 Partly cloudy wind, N. E. light
- 27 Cloudy wind, S. E. light, Showery
- 28 Cloudy wind, S. E. light
- 29 Partly cloudy wind, N. W. fresh
- 30 Clear wind, N. W. fresh
- 31 Clear wind, S. W. fresh

Tons off. lock & block & 25 fume miller Rope for Boat falls at night

Last night

Rain Storme last night

Magor Heap was her to Day & left two Pair ons for fullers
rock

JOURNAL of Light-house Station at Pumpham Rock Nov, 1, 1888

188 .
MONTH.

DAY.

RECORD OF IMPORTANT EVENTS AT THE STATION, BAD WEATHER, &c.

(Oct)

- 1 Clear wind, S.W. light & very pleasant day
- 2 Clear wind, S.W. strong
- 3 Cloudy wind, S.W. light & rainy, at 4 P.M. wind hals to N.W.
- 4 Clear wind, N.W. light & fair & warm day
- 5 Clear wind, S.W. fresh
- 6 Partly cloudy wind, S.W. light
- 7 Clear wind, N.E. light
- 8 Cloudy wind, N.E. light
- 9 Cloudy wind, S.W. light & rainy
- 10 Cloudy wind, N.E. light, with foggy & rainy
- 11 Clear wind, N.W. strong
- 12 Clear wind, N.W. fresh
- 13 Clear wind, S.W. light
- 14 Clear wind, W.S.W. fresh
- 15 Cloudy wind, S.E. light & foggy & rainy day
- 16 Clear wind, S.W. fresh, at 4 P.M. hals to N
- 17 Clear wind, N.W. fresh
- 18 Clear wind, N.E. light & fine day
- 19 Cloudy wind, S.S.E. light & rainy day
- 20 Clear wind, N.W. fresh
- 21 Clear wind, N.E. light & calm, 8 above this more
- 22 Clear wind, N.W. light
- 23 Clear wind, N.E. light, U.S. lances nos, he 10 2
- 24 Cloudy wind, N.E. light
- 25 Cloudy wind, N.E. strong & heavy
- 26 Cloudy wind, N.E. strong & thick & rainy
- 27 Cloudy wind, N.N.E. strong, thick &
- 28 Clear wind, S.W. light
- 29 Cloudy wind, N.W. light & rainy
- 30 Partly cloudy wind, N.W. light

light

Inspected 23rd Nov^r In good order
F. H. Redman
Inspector

Snow Storms
Rainey weeks

JOURNAL of Light-house Station at *Nearham Rock, Dec, 1, 1888*

188 . MONTH.	DAY.	RECORD OF IMPORTANT EVENTS AT THE STATION, BAD WEATHER, &c.
December	1	Partly cloudy wind, N.W. fresh
	2	Clear wind, S.W. light & fine day
	3	Clear wind, N.W. light
	4	Cloudy wind, N.W. light
	5	Clear wind, S.W. very light
	6	Partly cloudy wind, N.W. fresh
	7	Clear wind, N.W. light at 3 P.M. held to west
	8	Partly cloudy light air from N.W.
	9	Cloudy day wind, N.E. light & rainy
	10	Cloudy wind, N.E. calm light
	11	Cloudy wind, N.E. strong & heavy rain
	12	Clear wind, N.W. strong
	13	Clear wind, N.W. strong & cold day
	14	Partly cloudy wind, N.W. strong & cold, S.
	15	Clear wind, N.W. light, at 3 P.M. held to S.W.
	16	Clear wind, W.S.W. strong
	17	Cloudy wind, S.W. fresh with rain & thick fog
	18	Clear wind, N.W. strong
	19	Clear wind, N.W. light
	20	Clear wind, N.W. light
	21	Cloudy wind, N.W. light, river froze
	22	Clear wind, N.W. strong & cold weather
	23	Clear wind, S.W. strong, river froze over
	24	Clear wind, S.W. fresh, ice clear of ice
	25	Clear wind, S.W. light & warm day
	26	Partly cloudy wind, S.S.E. light
	27	Cloudy wind, S.S.E. fresh & rain & thick fog
	28	Partly cloudy wind, N.W. fresh
	29	Partly cloudy wind, N.E. light
	30	Clear wind, W.S.W. fresh
	31	

S.W. light

Snow last night

Have
Light

Over last night

The fire on the Kitchen bursted out last night
Last night

JOURNAL of Light-house Station at Pumpham Rock, Jan. 1, 1889

1889.
MONTH. Jan

DAY.

RECORD OF IMPORTANT EVENTS AT THE STATION, BAD WEATHER, &c.

- | | |
|----|---|
| 1 | Clear wind, N, W light & Pleasant |
| 2 | Partly cloudy wind, N, W light |
| 3 | Cloudy wind, S, W light |
| 4 | Clear wind, S, W light & warm thunder |
| 5 | Cloudy wind, N, E, fresh |
| 6 | Cloudy wind, N, E, strong & with thick |
| 7 | Cloudy wind, N, E, fresh & raining |
| 8 | Clear wind, N, W light |
| 9 | Cloudy wind, S, E strong & raining |
| 10 | Partly cloudy wind, N, N, W strong |
| 11 | Clear wind, N, W light |
| 12 | Clear wind, N, W fresh |
| 13 | Clear wind, S, W light |
| 14 | Partly cloudy wind, N, E, light |
| 15 | Clear wind, S, W light |
| 16 | Partly cloudy wind, N, S, W light |
| 17 | Cloudy wind, S, W strong & raining |
| 18 | Clear wind, N, N, W light |
| 19 | Clear wind, N, N, W strong |
| 20 | Cloudy wind, N, E, light |
| 21 | Partly cloudy wind, N, W strong & heavy |
| 22 | Clear wind, N, W light |
| 23 | Partly cloudy wind, S, W light |
| 24 | Partly cloudy wind, S, W light |
| 25 | Clear wind, S, W light |
| 26 | Cloudy wind, S, W light |
| 27 | Rainy wind, N, E, light |
| 28 | Clear wind, N, moderate |
| 29 | Clear wind, N, W strong |
| 30 | Clear wind, W, light |
| 31 | Clear wind, S, S, W light |

Stands at 3, P.M. 55, above

Fog & rain

Blow last night with snow & rain

JOURNAL of Light-house Station at Pomham Rocks Feb. 1. 1889

1889
MONTH. Feb.

DAY.

RECORD OF IMPORTANT EVENTS AT THE STATION, BAD WEATHER, &c.

- | | |
|----|---|
| 1 | Clear wind N. W. Strong |
| 2 | Clear wind N. W. heavy breeze |
| 3 | Partly cloudy wind N. N. W. fresh. |
| 4 | Clear wind W. Light |
| 5 | Raining wind S. S. E. fresh breeze |
| 6 | Clear wind N. W. fresh breeze |
| 7 | Clear wind N. W. blowing a Gale |
| 8 | Snowing wind S. S. W. Light |
| 9 | Cloudy wind N. W. Light. |
| 10 | Clear & cold wind N. W. Light |
| 11 | Cloudy wind N. E. Light snowing |
| 12 | Partly cloudy snowing wind S. S. W. fresh |
| 13 | Clear wind N. W. Strong |
| 14 | Clear & cold wind N. W. fresh |
| 15 | Clear wind N. W. Light |
| 16 | Partly cloudy wind S. S. E. light |
| 17 | Partly cloudy wind S. S. W. Light |
| 18 | Cloudy wind N. E. raining with fog light |
| 19 | Clear wind N. W. fresh |
| 20 | Clear wind N. W. fresh |
| 21 | Clear wind N. W. Light |
| 22 | Clear wind S. S. W. fresh |
| 23 | Clear wind N. W. blowing a Gale. |
| 24 | Partly cloudy wind S. S. W. Light |
| 25 | Clear wind N. W. fresh |
| 26 | Partly cloudy wind S. S. W. light |
| 27 | Cloudy wind S. E. Light |
| 28 | Partly cloudy wind S. E. light damp |

Feb. 1. 1859

Freeze
ish.

Gale
bit

light
morning
11 feet

light
bright
very light

Gale
light
bit

light damp

River frozen over
" " "

River clear of ice

Thermometer 6 deg above 0

JOURNAL of Light-house Station at *Pomham Rocks* March

1889.
MONTH.

DAY.

RECORD OF IMPORTANT EVENTS AT THE STATION, BAD WEATHER, &c.

March

- | | |
|----|---|
| 1 | Clear wind, N. E. Light |
| 2 | Clear wind S. E. Light |
| 3 | Partly Cloudy wind S. E. Light |
| 4 | Cloudy wind S. E. light raining |
| 5 | Cloudy & raining wind N. E. Strong |
| 6 | Cloudy wind N. E. rainy fresh breeze |
| 7 | Partly cloudy wind N. W. fresh breeze |
| 8 | Clear wind N. West Strong |
| 9 | Partly cloudy wind N. W. Strong |
| 10 | Clear wind N. W. Strong |
| 11 | Clear wind S. W. light |
| 12 | Clear wind S. S. W. Light |
| 13 | Clear wind S. W. fresh |
| 14 | Clear wind S. E. Light |
| 15 | Partly cloudy wind N. E. fresh |
| 16 | Cloudy raining wind N. E. blowing Gale |
| 17 | Cloudy wind N. E. Strong thick & raining |
| 18 | Partly Cloudy wind N. E. Light raining |
| 19 | Partly Cloudy wind S. E. Light rainy |
| 20 | Cloudy raining & snowing wind N. E. fresh |
| 21 | Cloudy wind N. E. raining blowing Gale |
| 22 | Clear wind N. E. Light |
| 23 | Clear wind S. W. Light |
| 24 | Clear wind S. W. light |
| 25 | Clear wind S. W. light |
| 26 | Clear wind S. W. fresh |
| 27 | Partly Cloudy wind S. W. Strong |
| 28 | Cloudy wind N. W. light |
| 29 | Clear wind S. W. fresh |
| 30 | Clear wind N. W. fresh |
| 31 | Cloudy wind S. W. fresh, Snow |

Inspected station. Good order

W. A. Rodgers - Inspector

John Willis, Lieut Engrs - U. S. Army.

188 .
MONTH.

DAY.

RECORD OF IMPORTANT EVENTS AT THE STATION, BAD WEATHER, &c.

188 . MONTH.	DAY.	RECORD OF IMPORTANT EVENTS AT THE STATION, BAD WEATHER, &c.
April	1	Cloudy wind N. E. light raining
	2	Cloudy wind N. E. light
	3	Cloudy wind N. E. rain light
	4	Partly Cloudy wind N. E. light
	5	Partly Cloudy wind S. E. fresh
	6	Clear wind N. E. fresh & cold
	7	Cloudy wind N. E. fresh & cold
	8	Cloudy wind N. E. Blowing Gale
	9	Partly cloudy wind N. E. light
	10	Clear wind S. W. fresh
	11	Clear wind N. W. light
	12	Partly Cloudy wind N. E. light raining
	13	Clear wind N. W. fresh
	14	Clear wind S. W. light
	15	Clear wind N. W. light & pleasant
	16	Clear wind S. S. E. light warm.
	17	Cloudy wind N. E. light thick raining
	18	Cloudy wind N. E. light
	19	Clear wind S. W. light warm
	20	Clear wind S. W. Strong
	21	Clear wind S. W. fresh breeze
	22	Clear wind N. W. fresh
	23	Clear wind S. W. Strong
	24	Clear wind S. W. Strong
	25	Cloudy wind S. S. W. light & rainy
	26	Cloudy wind S. S. E. fresh & rain
	27	Cloudy wind S. S. W. Strong & rainy
	28	Partly Cloudy wind S. W. fresh
	29	Clear wind N. W. Strong
	30	Clear wind N. W. fresh breeze, to d

The Centennial in commemoration of President Washington

1889.
MONTH.

DAY.

RECORD OF IMPORTANT EVENTS AT THE STATION, BAD WEATHER, &c.

May

- 1 Clear wind, N. W. fresh
- 2 Partly cloudy wind, N. W. light
- 3 Partly cloudy wind, N. W. light
- 4 Clear wind S. S. W. light
- 5 Clear wind S. W. light
- 6 Clear wind, S. W. moderate
- 7 Clear wind, S. W. light & warm
- 8 Clear wind, S. W. fresh
- 9 Clear wind, S. W. fresh
- 10 Partly cloudy wind, N. W. light
- 11 Clear wind, S. W. light & warm
- 12 Partly cloudy wind, S. W. strong
- 13 Partly cloudy wind, S. W. light
- 14 Clear wind S. W. fresh breeze
- 15 Clear wind, S. W. light & warm
- 16 Clear wind, S. W. light
- 17 Clear wind S. W. light breeze
- 18 Clear wind, S. W. fresh breeze
- 19 Clear wind, S. W. fresh foggy
- 20 Raining wind S. S. W. fresh foggy
- 21 Raining wind S. W. light thick
- 22 Partly cloudy & thick weather wind S. W.
- 23 Cloudy wind, N. E. & raining wind, N. E. light
- 24 Cloudy wind, W. S. W. fresh
- 25 Clear wind N. N. W. light
- 26 Cloudy wind N. E. light & rainey
- 27 Cloudy wind E. S. E. light & rainey hard
- 28 Clear wind, W. S. W. strong
- 29 Clear wind, S. W. fresh
- 30 Partly cloudy wind, S. W. light & showers
- 31 Clear wind, S. W. strong

Station in good order Wm. Babcock
Lieut. U.S.A.
Asst. Inspector.

Per Boat Comd. W. J. ...

JOURNAL of Light-house Station at

Pumham Rock

1889
MONTH.

DAY.

RECORD OF IMPORTANT EVENTS AT THE STATION, BAD WEATHER, &c.

June

- 1 Clear wind S. W. heavy
- 2 Cloudy wind S. W. light rainy
- 3 Cloudy wind S. W. light rainy
- 4 Partly cloudy wind S. S. W. light
- 5 Partly cloudy wind N. W. light
- 6 Partly cloudy wind N. W. fresh breeze
- 7 Clear wind N. E. light at 3 P.M. had to N. S. W.
- 8 Cloudy wind S. W. and rainey
- 9 Clear wind S. W. fresh
- 10 Partly cloudy wind S. W. fresh
Clear till 12 M. then clouds up with
- 11 Cloudy wind N. S. W. & rainey
- 12 Partly cloudy wind S. W. fresh
- 13 Clear wind S. W. light
- 14 Clear wind S. W. fresh at 4 clouds up
- 15 Clear wind S. W. fresh
- 16 Cloudy wind N. N. W. light & rainey
- 17 Clear wind N. N. E. light
- 18 Cloudy wind N. E. light
- 19 Clear wind N. W. fresh
- 20 Clear wind S. E. fresh
- 21 Clear wind N. N. W. fresh
- 22 Clear wind N. W. light
- 23 Partly cloudy wind light
- 24 Partly cloudy wind S. W. fresh
- 25 Clear wind S. E. fresh
- 26 Clear wind S. S. E. light
- 27 Clear Wind S. W. light
- 28 Partly cloudy wind S. Fresh & thunder
- 29 Clear wind S. S. E. light

Thunder & rain rain

JOURNAL of Light-house Station at Purnham Rock

188 .
MONTH.

DAY.

RECORD OF IMPORTANT EVENTS AT THE STATION, BAD WEATHER, &c.

July 1

- | | |
|----|---|
| 1 | Clear wind S.W. light |
| 2 | Cloudy wind S.S.E. light & rainey |
| 3 | Cloudy wind S.W. strong & raining hard |
| 4 | Cloudy wind S.S.W. raining at 2 A.M. |
| 5 | Clear wind N.W. light |
| 6 | Clear wind S.W. light |
| 7 | Partly cloudy wind N.W. light |
| 8 | Cloudy wind N.E. light |
| 9 | Cloudy wind N.E. light |
| 10 | Cloudy wind N.E. light |
| 11 | Cloudy wind S.W. fresh & raining |
| 12 | Partly cloudy wind S.W. |
| 13 | Partly cloudy wind S.W. fresh |
| 14 | Clear wind S.W. light |
| 15 | Cloudy wind N.E. fresh & heavy rain |
| 16 | Clear wind N.W. fresh |
| 17 | Partly cloudy wind N.W. fresh |
| 18 | Clear wind S.S.W. light |
| 19 | Partly cloudy wind S.W. strong |
| 20 | Cloudy wind S.W. heavy & rain at 2 P.M. floors of |
| 21 | Partly cloudy wind N.W. light |
| 22 | Clear wind S.W. light |
| 23 | Cloudy wind S.W. fresh, at 4 P.M. heavy thin |
| 24 | Clear wind N.W. fresh |
| 25 | Partly cloudy wind S.W. light |
| 26 | Clear wind S.S.E. light |
| 27 | Cloudy wind N.E. light & raining |
| 28 | Cloudy & rainey day wind S.W. light |
| 29 | Partly cloudy wind S.W. strong |
| 30 | Cloudy wind S.W. strong & raining |
| 31 | Cloudy wind N.W. fresh & rainey |

Inspected in Good order

Alfred Rodgers Inspector

Shower

JOURNAL of Light-house Station at Penham Rock, August 1889

1889. MONTH.	DAY.	RECORD OF IMPORTANT EVENTS AT THE STATION, BAD WEATHER, &c.
August	1	Cloudy Wind, S. W. rain wind fresh
	2	Cloudy wind, S. W. light
	3	Cloudy wind, S. W. light heaves thunder &
	4	Clear wind N. N. W. light
	5	Cloudy wind, N. W. light & raining
	6	Cloudy wind, N. W. light
	7	Clear wind, N. W. light
	8	Clear wind, N. W. fresh
	9	Cloudy wind, W. S. W. fresh
	10	Clear wind, S. W. fresh
	11	Clear wind, N. W. fresh
	12	Partly cloudy wind, N. W. fresh
	13	Cloudy wind, N. E. light
	14	Cloudy wind, N. E. light & vary
	15	Cloudy wind, N. E. light
	16	Clear wind, N. W. light
	17	Clear wind, N. W. light
	18	Clear wind, S. W. light
	19	Partly cloudy wind, S. W. light
	20	Clear wind, S. W. light
	21	Clear wind, S. W. fresh
	22	Clear wind, N. W. fresh
	23	Cloudy wind, N. E. light
	24	Partly cloudy wind, N. W. W. light
	25	Clear wind, N. E. light
	26	Clear wind, N. E. light
	27	Clear wind, N. E. light
	28	Clear wind, N. E. light
	29	Partly cloudy wind, N. E. light
	30	Thick fog wind, S. W. light
	31	Clear wind, N. E. light

lightning heavy rain

W. States Str. Mistletoe here to-day

JOURNAL of Light-house Station at *Punham Rock, Sept. 1889*

188 .
MONTH.

DAY.

RECORD OF IMPORTANT EVENTS AT THE STATION, BAD WEATHER, &c.

- 1 Clear wind, N. N. E. light
- 2 Partly cloudy wind, S. W. light & foggy
- 3 Thick smoky weather wind, S. W. fresh
- 4 Clear wind, S. B. E. strong, Supply Boat left sup
- 5 Partly cloudy wind, S. S. E. fresh, Steamer
- 6 Clear wind, S. W. fresh
- 7 Thick fog till, 10 A.M. & then clears, wind
- 8 Cloudy wind, N. E. light
- 9 Cloudy wind, N. E. fresh
- 10 Cloudy wind, N. E. strong
- 11 Cloudy wind, N. E. fresh & raining & foggy
- 12 Cloudy wind, N. E. fresh & Rainey
- 13 Cloudy wind, N. E. light & raining
- 14 Partly cloudy wind, S. E. light
- 15 Partly cloudy wind, S. W. S. strong, & thick fog, at 5 P. M.
- 16 Cloudy wind, S. E. fresh
- 17 Cloudy wind, S. W. strong
- 18 Cloudy wind, N. W. light & rainy
- 19 Partly cloudy wind, N. W. fresh
- 20 Cloudy wind, S. W. strong.
- 21 Partly cloudy wind, N. W. rainey in show
- 22 Partly cloudy wind, N. W. fresh
- 23 Clear wind, N. W. light & Short day
- 24 Partly cloudy wind, S. S. W. light
- 25 Cloudy wind, S. E. light & Showery
- 26 Thick fog, & Cloudy wind, S. E. light & Rainey
- 27 Clear wind, N. N. W. fresh
- 28 Partly cloudy wind, N. W. fresh
- 29 Partly cloudy wind, N. W. light
- 30 Partly cloudy wind, S. W. strong

Oil

to Day
Laticau was her to Day & left five tons coal

N.E. light

4117

JOURNAL of Light-house Station at Pumpham Rock Oct. 1, 1889

188 .
MONTH.

DAY.

RECORD OF IMPORTANT EVENTS AT THE STATION, BAD WEATHER, &c.

Oct

- 1 Partly cloudy wind N.W. fresh
- 2 Clear wind N.W. strong
- 3 Clear wind S.W. fresh
- 4 Partly cloudy wind N.E. light
- 5 Partly cloudy wind S.W. light
- 6 Cloudy wind S.E. light
- 7 Partly cloudy wind N.E. fresh
- 8 Partly cloudy wind N.W. fresh & cold
- 9 Partly cloudy wind N.S.W. fresh
- 10 Partly cloudy wind N.W. strong
- 11 Cloudy wind S.W. light
- 12 Partly cloudy wind light, S.W.
- 13 Cloudy wind N.E. fresh & raining
- 14 Cloudy wind N.E. heavy fresh & raining
- 15 Partly cloudy wind N.E. fresh
- 16 Clear wind N.N.E. fresh
- 17 Clear wind S.W. light
- 18 Clear wind N.W. fresh
- 19 Clear wind S.W. fresh
- 20 Clear wind S.W. light, B & Brothers feet
- 21 Cloudy wind N.E. light & raining
- 22 Clear wind N.E. light
- 23 Partly cloudy wind N.E. light
- 24 Cloudy wind N.E. light
- 25 Cloudy wind N.E. light
- 26 Cloudy wind S.S.W. fresh
- 27 Cloudy wind S.E. light & raining
- 28 Partly cloudy wind S.W. light & heavy
- 29 Cloudy wind N.E. light & raining
- 30 Cloudy wind N.N.W. light
- 31 Partly cloudy wind N.W. light

In wa goat & lining my stove to Day \$2,50

Rain Last night
Day

1889.
MONTH.

DAY.

RECORD OF IMPORTANT EVENTS AT THE STATION, BAD WEATHER, &c.

Nov

- 1 Cloudy wind, N, E, light
- 2 Partly cloudy wind, S, W, light
- 3 Cloudy wind, S, W, Strong at 2 P.M. said to be light
- 4 Clear wind, N, W, light
- 5 Cloudy wind, N, W, Strong
- 6 Partly cloudy wind, N, W, Strong
- 7 Clear wind, S, W, Strong
- 8 Partly cloudy wind, S, W, light
- 9 Cloudy wind, S, W, fresh & raining hard
- 10 Cloudy wind N, E, Light
- 11 Cloudy wind, N, W, light
- 12 Partly cloudy wind, S, E, light
- 13 Cloudy wind, N, E, light & Breezy
- 14 Partly cloudy wind, N, W, light
- 15 Clear wind, N, W, Strong
- 16 Clear wind, N, W, light & fine day
- 17 Clear wind, N, W, S, fresh
- 18 Partly cloudy wind, N, W, light
- 19 Cloudy wind, N, E, Strong
- 20 Partly cloudy wind, S, W, light
- 21 Cloudy wind, S, W, light
- 22 Partly cloudy wind, N, S, W, light
- 23 Partly cloudy wind N, E, fresh
- 24 Partly cloudy wind S, W, light
- 25 Cloudy wind N, N, W, light with rain
- 26 Partly cloudy wind, N, W, light
- 27 Cloudy wind S, E, light
- 28 Partly cloudy wind, S, W, strong, last night last night
- 29 Clear wind, S, W, fresh
- 30 Clear wind, N, W, fresh

Comd Rogers

~~31~~

W. Sig

Inspected - Good order

Harvey gate, S.E.,

W. H. Rodgers
Inspector

1889
MONTH.

DAY.

RECORD OF IMPORTANT EVENTS AT THE STATION, BAD WEATHER, &c.

Dec.

- 1 Clear wind, S. W. light, lube
- 2 Partly cloudy wind, W. N. W. fresh
- 3 Cloudy wind, N. E. fresh & raining
- 4 Cloudy wind, S. E. light & snowing
- 5 Cloudy wind, S. W. light
- 6 Partly cloudy wind N. W. light
- 7 Clear wind S. W. light
- 8 Partly cloudy wind, S. W. fresh
- 9 Cloudy wind, S. W. light & rainy
- 10 Clear wind, N. E. light
- 11 Partly cloudy wind, S. W. fresh
- 12 Clear wind, S. W. fresh breeze
- 13 Partly cloudy wind, N. W. light
- 14 Cloudy wind, S. E. light & snowing
- 15 Cloudy wind, N. N. W. light, Snow Storm
- 16 Clear wind light with light arc from N. E.
- 17 Cloudy wind, S. E. light & calm
- 18 Cloudy wind, N. E. light & foggy & dense
- 19 Clear wind, N. N. W. fresh
- 20 Partly cloudy wind, S. W. fresh & foggy
- 21 Clear wind, N. W. fresh
- 22 Cloudy wind, S. E. Strong & raining hard
- 23 Clear wind, N. W. light
- 24 Partly cloudy wind, S. E. light
- 25 Clear wind, S. W. light
- 26 Cloudy wind, N. by E. Strong & rain
- 27 Clear wind, N. W. Strong & cold
- 28 Clear wind, N. W. fresh
- 29 Clear wind, N. W. Strong
- 30 Cloudy wind, N. W. strong
- 31 Clear wind, N. E. light

Last night

1890.
MONTH.

DAY.

RECORD OF IMPORTANT EVENTS AT THE STATION, BAD WEATHER, &c.

Jan,

- 1 Cloudy wind. S. W. fresh
- 2 Cloudy wind. S. W. Strong
- 3 Clear wind. N. W. fresh
- 4 Clear wind S. E. light
- 5 Cloudy wind S. W. light with rain
- 6 Partly Cloudy wind S. W. fresh Breeze
- 7 Cloudy wind S. W. light
- 8 Cloudy wind. S. W. fresh
- 9 Clear wind. N. W. Strong
- 10 Cloudy wind. N. N. E. snowing fresh
- 11 Cloudy wind. N. E. light & snowing & rain
- 12 Clear wind. N. W. light
- 13 Cloudy wind. S. W. Strong & rainy Day
- 14 Clear Wind. N. W. light
- 15 Cloudy wind. S. W. strong & raining hard
- 16 Cloudy wind. N. W. strong
- 17 Clear wind. N. W. fresh
- 18 Partly Cloudy wind S. W. light
- 19 Cloudy wind. N. W. light
- 20 Cloudy wind. S. W. light & raining
- 21 Clear wind. N. W. light.
- 22 Clear wind. N. W. blowing Gale
- 23 Cloudy wind. S. E. Strong snowing
- 24 Clear wind. N. W. fresh
- 25 Partly Cloudy wind S. W. Strong
- 26 Clear wind. N. W. light
- 27 Cloudy wind. N. E. fresh breeze snowing
- 28 Clear wind. N. W. Strong
- 29 Clear wind. S. W. light
- 30 Cloudy wind. N. E. fresh & snowing
- 31 Cloudy wind. N. E. Light

11

16 Jan 1,

main

top of

land

br

log

th

ground

ground

JOURNAL of Light-house Station at *Pomham Rocks*

1890
MONTH.

DAY.

RECORD OF IMPORTANT EVENTS AT THE STATION, BAD WEATHER, &c.

Feb.

- 1 Cloudy wind, N. W. fresh
- 2 Cloudy wind, S. E. light
- 3 Cloudy wind, S. W. light *Thick fog*
- 4 Cloudy wind, S. W. light
- 5 Cloudy wind, N. W. *strong*
- 6 Clear wind, N. W. light
- 7 Cloudy wind, S. E. light
- 8 Cloudy wind, S. W. strong & rainey hard
- 9 Clear wind, N. W. light
- 10 Partly cloudy wind, N. E. light
- 11 Clear wind, S. W. light
- 12 Clear wind, N. W. fresh
- 13 Clear wind, S. W. light
- 14 Partly cloudy wind, S. W. light
- 15 Clear wind, N. N. W. fresh
- 16 Clear wind, N. W. fresh
- 17 Partly cloudy wind, S. E. light
- 18 Cloudy wind, N. E. light
- 19 Partly cloudy wind, N. E. light
- 20 Partly cloudy wind, S. W. fresh
- 21 Clear wind, S. W. blowing a Gale
- 22 Clear wind, N. W. fresh
- 23 Clear wind, S. W. light
- 24 Cloudy thick weather wind, S. E. light & raining
- 25 Heavy thick fog wind, S. E. light
- 26 Clear wind, N. W. light
- 27 Cloudy wind, N. E. light
- 28 Cloudy wind, S. E. fresh & rainey

Highest Tide for 18 years
Lowest Tide for 18 years

188 .
MONTH.

DAY.

RECORD OF IMPORTANT EVENTS AT THE STATION, BAD WEATHER, &c.

March

- | | |
|----|--|
| 1 | Cloudy wind, N.E. light |
| 2 | Cloudy, wind, N.E. Strong & snowing |
| 3 | Clear wind, N.W. light heavy gale last night |
| 4 | Clear Wind, S.W. fresh |
| 5 | Clear wind, N.W. light |
| 6 | Cloudy wind, N.E. light, & snow on |
| 7 | Clear wind, N.W. fresh |
| 8 | Clear wind, S.E. light |
| 9 | Clear wind, S.W. fresh |
| 10 | Clear wind, S.W. light |
| 11 | Cloudy wind, S.E. light & raining, Steamer |
| 12 | Clear wind, S.W. fresh |
| 13 | Clear wind, S.E. light |
| 14 | Cloudy wind, S.E. thick & snowing |
| 15 | Partly Cloudy wind, N.W. light |
| 16 | Clear wind, W. fresh breeze |
| 17 | Clear wind, S.W. fresh |
| 18 | Clear wind, W. fresh breeze |
| 19 | Cloudy wind, N.E. blowing heavy with snow |
| 20 | Clear wind, S.W. Strong |
| 21 | Cloudy wind, S.W. light |
| 22 | Cloudy wind, S.E. light & Raining |
| 23 | Cloudy wind, N.W. Strong |
| 24 | Clear wind, N.W. light |
| 25 | Partly Cloudy wind, S.W. light |
| 26 | Clear wind, N.W. fresh |
| 27 | Clear wind, N.W. fresh |
| 28 | Cloudy wind, N.E. fresh raining |
| 29 | Clear wind, N.W. Strong |
| 30 | Cloudy wind, S.W. fresh |
| 31 | Partly Cloudy wind, S.W. fresh |

with snow

Grace Darling was here to day

Station in good order Wm. C. Babcock
Asst Prop.

with Thunder

1890
MONTH.

DAY.

RECORD OF IMPORTANT EVENTS AT THE STATION, BAD WEATHER, &c.

April

- 1 Clear wind, N. W. light
- 2 Clear wind, S. W. fresh
- 3 Clear wind, S. W. fresh
- 4 Cloudy wind, S. W. fresh raining
- 5 Clear wind, S. W. fresh
- 6 Clear wind, S. W. strong
- 7 Cloudy wind, S. W. light
- 8 Cloudy wind, S. W. light
- 9 Cloudy wind, S. E. light & rain
- 10 Partly cloudy wind, S. W. light
- 11 Partly cloudy wind, S. E. light
- 12 Clear wind, S. W. fresh
- 13 Clear wind, S. W. light
- 14 Clear wind, E. S. E. light
- 15 Partly cloudy wind, S. E. strong
- 16 Clear wind, S. W. fresh
- 17 Clear wind, S. W. strong
- 18 Clear wind, S. E. light
- 19 Partly cloudy wind, S. E. light
- 20 Clear wind, S. W. fresh
- 21 Partly cloudy wind, S. W. light
- 22 Clear wind, S. W. fresh, Bury setting
- 23 Cloudy wind, S. E. fresh
- 24 Cloudy wind, S. E. light
- 25 Cloudy wind, S. E. light Showery
- 26 Cloudy wind, S. E. light
- 27 Cloudy wind, S. E. light & rainey day
- 28 Partly cloudy wind, S. E. light
- 29 Clear wind, S. W. fresh
- 30 Clear wind, S. W. strong

Heavy Snow Storm last night-

dep

g

in

t

eg

th

ht
thing

money

light
ray

JOURNAL of Light-house Station at *Pomham Rock*

1890
MONTH.

DAY.

RECORD OF IMPORTANT EVENTS AT THE STATION, BAD WEATHER, &c.

April
May

1	Clear wind, S. E. Strong
2	Clear wind S. W. fresh
3	Clear wind, S. W. Strong
4	Cloudy & thick fog & rain light S. W.
5	Cloudy & thick fog wind S. W. fresh
6	Cloudy wind S. S. E. light thick fog & rain
7	Cloudy wind, S. W. light
8	Cloudy wind, N. E. fresh & rainey
9	Clear wind, N. S. W. fresh
10	Cloudy wind, S. W. light, showery
11	Cloudy wind N. E. at 2 & 8 M. Cald to
12	Clear wind, S. W. fresh
13	Clear wind, S. W. fresh
14	Clear wind, S. E. fresh
15	Cloudy wind, S. W. & raining thick
16	Cloudy wind, S. W. fresh
17	Clear wind, S. W. fresh
18	Clear wind S. E.
19	Partley cloudy wind, S. E. fresh
20	Cloudy wind, S. E. Blowing heavy Gale
21	Clear wind, S. S. E. light
22	Clear wind, N. E. light
23	Clear wind, N. E. light
24	Clear wind, S. W. light
25	Clear wind S. W. fresh
26	Partley cloudy wind, S. E. light
27	Cloudy wind, S. E. fresh & rainey
28	Partley cloudy wind, N. W. with
29	Cloudy wind, N. E. light
30	Clear wind, S. S. E.
31	Clear wind, S. W. Strong

Row

S. W. Knight

& rain

Rain & hail Station in good order & in operation
Comd. Babcock Lieut U.S. Navy

JOURNAL of Light-house Station at *Pomham Rock*

1890.
MONTH.

DAY.

RECORD OF IMPORTANT EVENTS AT THE STATION, BAD WEATHER, &c.

June

- | | |
|----|---|
| 1 | Clear very light N.W. wind |
| 2 | Partly cloudy wind N.W. light |
| 3 | Partly cloudy wind S.W. fresh |
| 4 | Partly cloudy wind S.E. light & showery |
| 5 | Clear wind N.W. light |
| 6 | Cloudy wind E.S.E. light |
| 7 | Partly cloudy wind S.E. fresh, heavy |
| 8 | Clear wind N.W. light |
| 9 | Partly cloudy wind N.W. fresh |
| 10 | Clear wind N.W. light |
| 11 | Partly cloudy wind S.E. light |
| 12 | Cloudy wind N.E. light |
| 13 | Cloudy wind S.E. light & rainy |
| 14 | Cloudy wind S.E. light & rainy |
| 15 | Partly cloudy wind N.E. light |
| 16 | Clear wind S.W. fresh |
| 17 | Clear wind W.S.W. light |
| 18 | Clear wind W.S.W. light |
| 19 | Partly cloudy wind S.E. light |
| 20 | Partly cloudy wind S.E. light |
| 21 | Cloudy wind S.W. fresh showery |
| 22 | Partly cloudy wind N.E. light |
| 23 | Partly cloudy wind S.W. light |
| 24 | Clear wind S.E. fresh |
| 25 | Partly cloudy wind N.W. light showery |
| 26 | Partly cloudy wind N.W. strong |
| 27 | Partly cloudy wind N.W. light |
| 28 | Partly cloudy wind N.W. light |
| 29 | Cloudy wind S.W. light |
| 30 | Clear wind S.W. fresh |

Thunder storme last night

July 1st

- 1 Bucky first Partly cloudy wind, S.W. fresh
- 2 Cloudy wind S.W. light
- 3 Partly cloudy wind, S.E. light
- 4 Partly cloudy wind, S.E. light
- 5 Partly cloudy wind, S.W. light
- 6 Clear wind S.E. light
- 7 Clear wind S.W. fresh
- 8 Clear wind, S.W. fresh
- 9 Clear wind, S.W. fresh
- 10 Partly cloudy wind, N.N.E. fresh
- 11 Clear wind S.W. light
- 12 Cloudy wind S.W. light
- 13 Clear wind, S.W. fresh
- 14 Clear wind S.W. light
- 15 Partly cloudy wind, S.W. fresh
- 16 Clear wind S.W. light
- 17 Cloudy wind, S.W. light
- 18 Clear wind, S.W. light
- 19 Partly cloudy wind, S.E. fresh
- 20 Partly cloudy wind, S.W. light
- 21 Partly cloudy wind, S.W. light
- 22 Clear wind S.W. light
- 23 Clear wind, S.W. light
- 24 Partly cloudy wind S.W. fresh
- 25 Partly cloudy wind S.W. light
- 26 Cloudy wind S.W. fresh & raining
- 27 Clear wind S.W. light
- 28 Clear wind S.W. light
- 29 Cloudy thick weather wind S.W. light
- 30 Clear wind S.W. fresh
- 31 Clear wind S.W. fresh breeze

Steamer ~~Mistletoe~~ arrived here to ^{left supplies ~~board~~} ~~day~~ Engineer's ^{supplies} ~~keep~~

Steamer Cactus with Coal.

1880
MONTH.

DAY.

RECORD OF IMPORTANT EVENTS AT THE STATION, BAD WEATHER, &c.

Aug.

- 1 Partly cloudy wind, S. E. light
- 2 Clear wind, S. E. light & dry
- 3 Clear wind, S. S. E. light
- 4 Clear wind, S. W. fresh
- 5 Clear wind, S. W. fresh breeze
- 6 Partly cloudy wind, S. W. fresh & raining
- 7 Clear wind, S. W. light
- 8 Partly cloudy wind, S. W. light - thick
- 9 Cloudy wind, S. E. light & raining
- 10 Partly cloudy wind, S. W. light - Showery
- 11 Clear wind, S. W. light Showery
- 12 Partly cloudy wind, S. E. light
- 13 Partly cloudy wind, S. E. light & Showery
- 14 Clear wind, S. W. light
- 15 Clear wind, S. W. light warm & dry
- 16 Clear wind, S. W. light
- 17 Partly clear wind, S. E. light Showery
- 18 Cloudy wind, S. E. light & raining
- 19 Partly cloudy wind, S. W. light & foggy thick
- 20 Partly cloudy wind, S. W. light - Showery
- 21 Cloudy wind, S. E. fresh Breeze thick weather
- 22 Clear wind, S. W. light
- 23 Cloudy wind, S. W. fresh
- 24 Clear wind, S. W. fresh breeze
- 25 Clear wind, S. W. fresh
- 26 Partly cloudy wind, S. W. fresh
- 27 Cloudy wind, S. W. fresh
- 28 Clear wind, S. W. fresh & Showery
- 29 Partly cloudy wind, S. W. fresh
- 30 Clear wind, S. S. E. fresh
- 31 Clear wind, S. W. fresh

9. Aug.

10. Aug.

9. Aug. Station in good order. W. P. Heap. Engr. 3 Dist

Inspected Station in good order
A. H. Rodgers
Captain & Inspector

1890.
MONTH.

DAY.

RECORD OF IMPORTANT EVENTS AT THE STATION, BAD WEATHER, &c.

Sept.

- | | |
|----|---|
| 1 | Clear wind S. W. fresh |
| 2 | Clear wind S. W. light |
| 3 | Clear wind N. E. light |
| 4 | Clear wind S. W. light |
| 5 | Cloudy wind S. S. W. light & showery |
| 6 | Clear wind S. S. E. light & rainy |
| 7 | Clear wind S. E. light |
| 8 | Clear wind S. W. light |
| 9 | Cloudy wind N. E. light |
| 10 | Cloudy wind N. E. light & rainy |
| 11 | Cloudy wind N. E. light & rainy |
| 12 | Cloudy wind S. W. strong & rainy |
| 13 | Cloudy wind S. W. fresh & showery |
| 14 | Cloudy wind N. W. light showery |
| 15 | Cloudy wind S. W. light & showery |
| 16 | Cloudy wind S. S. E. fresh & rainy |
| 17 | Cloudy wind S. E. light & showery |
| 18 | Clear wind N. W. light |
| 19 | Clear wind S. E. light |
| 20 | Clear wind S. W. light |
| 21 | Clear wind S. S. W. light |
| 22 | Clear wind S. W. light |
| 23 | Clear wind S. W. light |
| 24 | Clear wind N. N. E. strong |
| 25 | Clear wind S. E. light at 4. changed to |
| 26 | Cloudy wind S. E. light rainy |
| 27 | Partly cloudy wind N. N. E. light showery |
| 28 | Clear wind N. E. light |
| 29 | Clear wind N. E. light |
| 30 | Clear wind N. E. light |

Handwritten scribbles at the top of the page.

With Thunder

Handwritten scribbles in the middle of the page.

Handwritten scribbles in the lower middle of the page.

Handwritten scribbles at the bottom of the page.

1890
MONTH.

DAY.

RECORD OF IMPORTANT EVENTS AT THE STATION, BAD WEATHER, &c.

October

- | | |
|----|---|
| 1 | Clear wind - N. E. light |
| 2 | Clear wind S. W. light |
| 3 | Partly cloudy wind N. W. light |
| 4 | Partly cloudy wind N. W. light |
| 5 | Partly cloudy wind N. W. light |
| 6 | Cloudy wind S. E. light |
| 7 | Cloudy wind N. E. light |
| 8 | Cloudy wind N. E. light & rain |
| 9 | Cloudy wind N. E. light |
| 10 | Cloudy wind S. W. fresh |
| 11 | Cloudy wind N. E. light |
| 12 | Cloudy wind S. E. light & rainy |
| 13 | Cloudy wind N. E. light |
| 14 | Partly cloudy wind N. E. light |
| 15 | Clear wind N. W. strong |
| 16 | Partly wind S. W. light |
| 17 | Partly cloudy wind N. W. blowing a Gale |
| 18 | Clear wind N. W. light |
| 19 | Cloudy wind S. E. strong & rainy |
| 20 | Cloudy wind S. E. light & rainy |
| 21 | Clear wind S. E. light |
| 22 | Clear wind N. W. light |
| 23 | Cloudy wind N. E. light |
| 24 | Cloudy wind N. E. strong & rainy |
| 25 | Cloudy wind N. E. light |
| 26 | Cloudy wind N. E. light |
| 27 | Cloudy wind N. E. light |
| 28 | Cloudy wind West - fresh |
| 29 | Cloudy wind S. S. W. light & raining |
| 30 | Partly cloudy wind N. W. fresh |
| 31 | Partly cloudy wind N. W. light |

Station in front of

Henry H. Pickens
Captain. Inspector

1887
MONTH.

DAY.

RECORD OF IMPORTANT EVENTS AT THE STATION, BAD WEATHER, &c.

November

- | | |
|----|--------------------------------------|
| 1 | Partly cloudy wind N. W. fresh |
| 2 | Cloudy wind S. W. fresh |
| 3 | Partly cloudy wind S. W. light |
| 4 | Clear wind N. W. fresh |
| 5 | Clear wind S. W. fresh |
| 6 | Clear wind S. W. light |
| 7 | Clear wind N. W. light |
| 8 | Partly cloudy wind S. W. light |
| 9 | Cloudy wind S. W. fresh |
| 10 | Clear wind N. E. light |
| 11 | Cloudy wind N. E. light & rainy |
| 12 | Cloudy wind N. E. light Lamp weather |
| 13 | Clear wind S. light |
| 14 | Clear wind S. light |
| 15 | Clear wind S. W. light |
| 16 | Clear wind N. W. light |
| 17 | Cloudy wind N. W. fresh |
| 18 | Clear wind N. W. Strong |
| 19 | Partly cloudy wind N. W. fresh |
| 20 | Clear wind N. W. blowing a gale |
| 21 | Clear wind N. W. fresh |
| 22 | Clear wind N. W. Strong |
| 23 | Cloudy wind N. W. Strong |
| 24 | Clear wind N. W. fresh |
| 25 | Partly cloudy wind N. W. light |
| 26 | Clear wind N. W. light |
| 27 | Clear wind N. W. fresh |
| 28 | Partly cloudy wind N. W. fresh |
| 29 | Clear wind N. W. Strong |
| 30 | Partly cloudy wind N. W. light |

mistletoe Capt, Webster on light-house duty

1880
MONTH.

DAY.

RECORD OF IMPORTANT EVENTS AT THE STATION, BAD WEATHER, &c.

December	1	Clear wind, N. W. fresh
	2	Clear wind, N. W. fresh
	3	Cloudy wind S. E. blowing a gale snowing
	4	Clear wind N. W. strong
	5	Cloudy wind N. W. fresh
	6	Cloudy wind N. E. light
	7	Clear wind, N. W. fresh
	8	Cloudy wind, N. E. light
	9	Clear wind, N. E. light
	10	Cloudy wind, N. E. light
	11	Partly cloudy wind N. E. light
	12	Clear wind, N. W. fresh
	13	Partly cloudy wind N. W. fresh
	14	Clear wind, N. W. strong
	15	Clear wind, N. W. fresh
	16	Partly cloudy wind, N. W. light
	17	Cloudy wind N. E. fresh rainy
	18	Partly cloudy wind, N. W. strong
	19	Clear wind N. W. fresh
	20	Clear wind N. W. fresh
	21	Partly cloudy wind S. W. fresh
	22	Clear wind, N. W. blowing a Gale
	23	Clear wind S. W. light
	24	Clear wind N. W. strong
	25	Clear wind, N. W. light
	26	Cloudy wind N. E. light snowing
	27	Clear wind, N. W. fresh
	28	Clear wind, N. W. light
	29	Clear wind, N. W. fresh
	30	Partly cloudy wind N. W. light
	31	Partly cloudy wind, N. W. light

[Faint, illegible handwriting at the top of the page]

[Faint, illegible handwriting in the middle section of the page]

Cactus
United States Steamer passed here to-day

[Faint, illegible handwriting at the bottom of the page]

JOURNAL of Light-house Station at *Panham Rock*

1889
MONTH.

DAY.

RECORD OF IMPORTANT EVENTS AT THE STATION, BAD WEATHER, &c.

Jan'y

- 1 Cloudy wind S. E. light rain & snow
- 2 Cloudy wind S. E. light rain & fog
- 3 Clear wind N. W. fresh
- 4 Cloudy, wind N. W. light snow
- 5 Cloudy wind N. W. fresh snowing
- 6 Clear wind N. W. fresh
- 7 Clear wind N. W. fresh
- 8 Clear wind N. W. fresh
- 9 Clear wind N. W. fresh
- 10 Clear wind N. W. fresh
- 11 Cloudy wind S. E. blowing Gale
- 12 Clear wind N. W. strong
- 13 Clear wind N. W. strong
- 14 Clear & cold river froze over wind N. W. light
- 15 Cloudy wind N. W. light
- 16 Clear wind N. E. light
- 17 Cloudy wind N. E. fresh with rain & sleet
- 18 Cloudy wind N. E. light snowing
- 19 Cloudy wind N. E. light snow
- 20 Clear wind S. W. light
- 21 Cloudy wind N. W. light
- 22 Cloudy wind S. W. light
- 23 Partly cloudy wind N. W. fresh
- 24 Clear wind N. W. light
- 25 Cloudy wind N. E. strong
- 26 Cloudy wind S. W. light
- 27 Partly cloudy wind S. E. light
- 28 Thick fog wind S. E. light
- 29 foggy wind S. W. raining light
- 30 Clear wind N. W. strong
- 31 Cloudy wind S. E. strong & rainy

Draining

July 30/91 - Station inspected S.H. West W. Comdr
USN

JOURNAL of Light-house Station at *Panham Rock*

1891.
MONTH.

DAY.

RECORD OF IMPORTANT EVENTS AT THE STATION, BAD WEATHER, &c.

1891. MONTH.	DAY.	RECORD OF IMPORTANT EVENTS AT THE STATION, BAD WEATHER, &c.
February	1	Partly Cloudy wind West light
	2	Partly Cloudy wind N. W. fresh
	3	Cloudy wind S. W. Strong & Rainy
	4	Clear wind N. W. blowing Gale
	5	Clear wind SW moderate
	6	Partly Cloudy wind S. W. light
	7	Partly Cloudy wind S. E. light
	8	Cloudy wind N. E. Moderate Snow & Rain
	9	Cloudy wind S. E. fresh Rain & Snow
	10	Partly Cloudy wind N. W. fresh River clear
	11	Clear wind N. W. light
	12	Partly Cloudy wind Moderate River full of
	13	Partly Cloudy wind N. E. light
	14	Clear wind N. W. Strong
	15	Clear wind S. W. fresh
	16	Cloudy wind S. W. light & Rainy
	17	weather rainy wind N. E. light
	18	Partly Cloudy wind N. E. light
	19	Clear wind N. W. light
	20	Thick Snowy weather wind S. E. light
	21	Thick foggy with rain wind S. E. light
	22	Clear wind S. W. moderate
	23	Partly Cloudy wind N. W. light
	24	Clear wind S. W. light
	25	Cloudy wind S. W. Strong & Rainy
	26	Cloudy wind S. E. light & Rainy
	27	Clear wind N. W. fresh Thunder &
	28	Cloudy wind N. W. fresh breeze with
	29	
	30	

of ice

this ice

14

lightning

Thunder Storms Rain & Snow

JOURNAL of Light-house Station at Pomham Rock

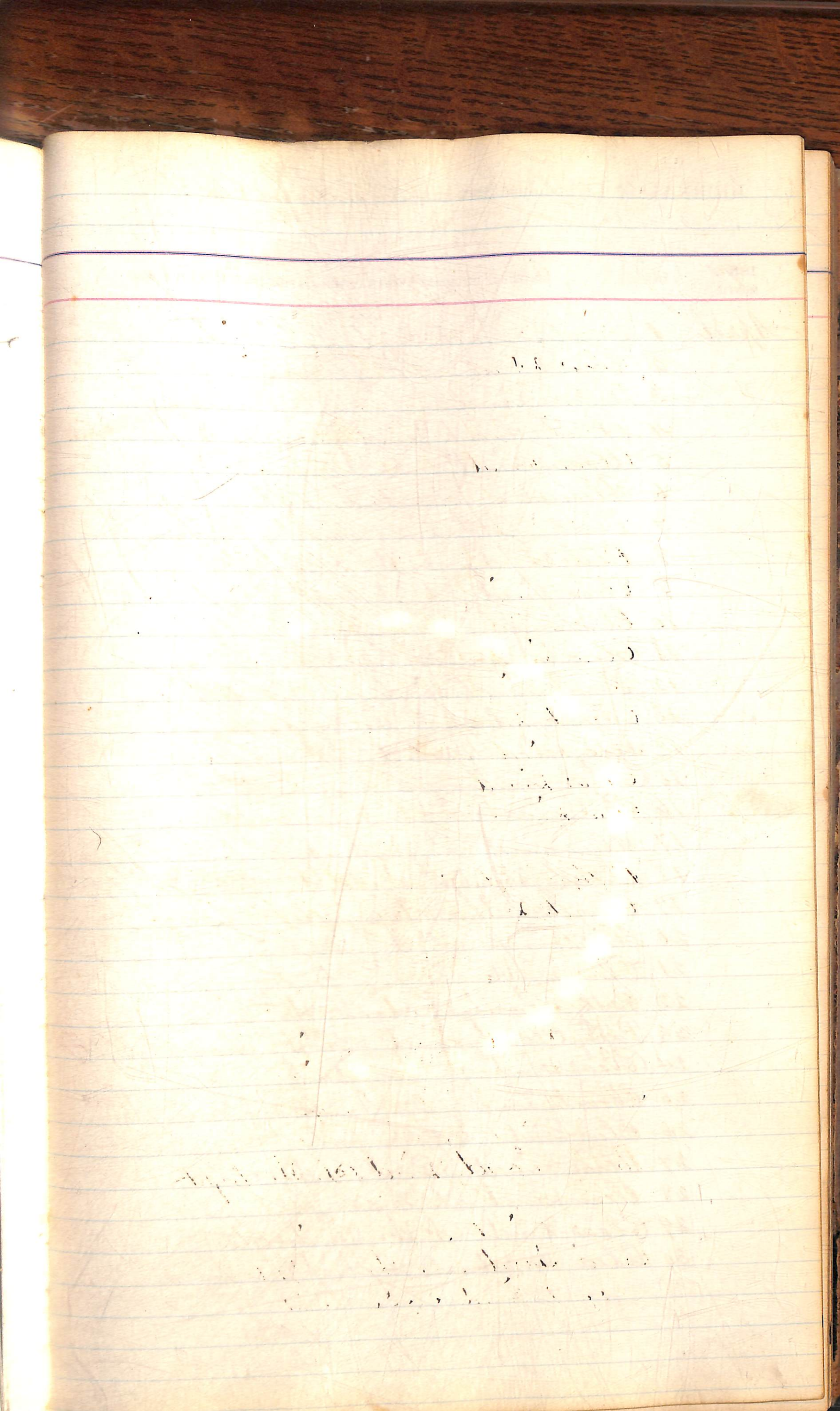
1891
MONTH.

DAY.

RECORD OF IMPORTANT EVENTS AT THE STATION, BAD WEATHER, &c.

March

- | | |
|----|---|
| 1 | weather clear wind N. W. fresh breeze |
| 2 | clear wind N. W. fresh & cold |
| 3 | weather cloudy wind N. E. light with snow |
| 4 | cloudy wind N. E. light with snow & rain |
| 5 | clear wind N. W. strong |
| 6 | clear wind N. W. strong breeze |
| 7 | clear wind N. W. light |
| 8 | partly cloudy wind S. W. light |
| 9 | cloudy wind S. E. light & raining |
| 10 | clear wind N. W. blowing a gale |
| 11 | clear wind S. W. fresh |
| 12 | cloudy wind S. E. light & raining |
| 13 | cloudy wind S. S. W. fresh breeze & rainy |
| 14 | clear wind N. W. strong breeze |
| 15 | clear wind N. W. fresh |
| 16 | clear wind S. S. W. strong |
| 17 | clear wind N. W. strong |
| 18 | partly cloudy wind N. W. strong |
| 19 | cloudy wind N. E. light breeze |
| 20 | partly cloudy wind N. E. fresh |
| 21 | rainy wind N. E. strong |
| 22 | cloudy wind N. E. light |
| 23 | clear wind N. E. light |
| 24 | cloudy wind N. E. light |
| 25 | clear wind N. E. light |
| 26 | clear wind N. E. light breeze |
| 27 | partly cloudy wind S. W. light |
| 28 | clear wind N. E. light |
| 29 | clear wind N. W. light |
| 30 | clear wind N. W. light |
| 31 | cloudy wind S. E. light |



MONTH.	DAY.	RECORD OF IMPORTANT EVENTS AT THE STATION, BAD WEATHER, &c.
April	1	Partly cloudy wind N. E. light
	2	Cloudy wind S. W. fresh
	3	Clear wind N. W. strong
	4	Partly cloudy wind S. W. light
	5	Clear wind S. W. fresh
	6	Pleasant wind S. W. light
	7	Partly cloudy wind S. W. strong breeze
	8	Clear wind N. W. strong
	9	Clear wind S. W. light
	10	Clear wind S. W. fresh
	11	Cloudy wind S. E. strong & raining
	12	Partly cloudy wind S. W. fresh
	13	Clear wind S. W. light
	14	Partly cloudy wind S. W. fresh
	15	Partly cloudy wind N. E. light
	16	Partly cloudy wind S. E. light
	17	Clear wind S. W. fresh
	18	Cloudy wind S. W. light rain & thunder
	19	Clear wind N. W. fresh
	20	Clear wind S. W. light
	21	Clear wind S. W. strong
	22	Partly cloudy wind S. W. light
	23	Partly cloudy wind N. W. fresh
	24	Clear wind S. W. fresh showery with
	25	Cloudy wind N. W. strong & showery
	26	Clear wind N. W. fresh
	27	Clear wind S. W. light
	28	Clear wind S. W. light
	29	Clear wind S. W. moderate
	30	Clear wind S. W. light & warm

1. ...)
2. ...)
3. ...)
4. ...)
5. ...)
6. ...)
7. ...)
8. ...)
9. ...)
10. ...)
11. ...)
12. ...)
13. ...)
14. ...)
15. ...)
16. ...)
17. ...)
18. ...)
19. ...)
20. ...)
21. ...)
22. ...)
23. ...)
24. ...)
25. ...)
26. ...)
27. ...)
28. ...)
29. ...)
30. ...)
31. ...)
32. ...)
33. ...)
34. ...)
35. ...)
36. ...)
37. ...)
38. ...)
39. ...)
40. ...)
41. ...)
42. ...)
43. ...)
44. ...)
45. ...)
46. ...)
47. ...)
48. ...)
49. ...)
50. ...)
51. ...)
52. ...)
53. ...)
54. ...)
55. ...)
56. ...)
57. ...)
58. ...)
59. ...)
60. ...)
61. ...)
62. ...)
63. ...)
64. ...)
65. ...)
66. ...)
67. ...)
68. ...)
69. ...)
70. ...)
71. ...)
72. ...)
73. ...)
74. ...)
75. ...)
76. ...)
77. ...)
78. ...)
79. ...)
80. ...)
81. ...)
82. ...)
83. ...)
84. ...)
85. ...)
86. ...)
87. ...)
88. ...)
89. ...)
90. ...)
91. ...)
92. ...)
93. ...)
94. ...)
95. ...)
96. ...)
97. ...)
98. ...)
99. ...)
100. ...)

Thunder & lightning

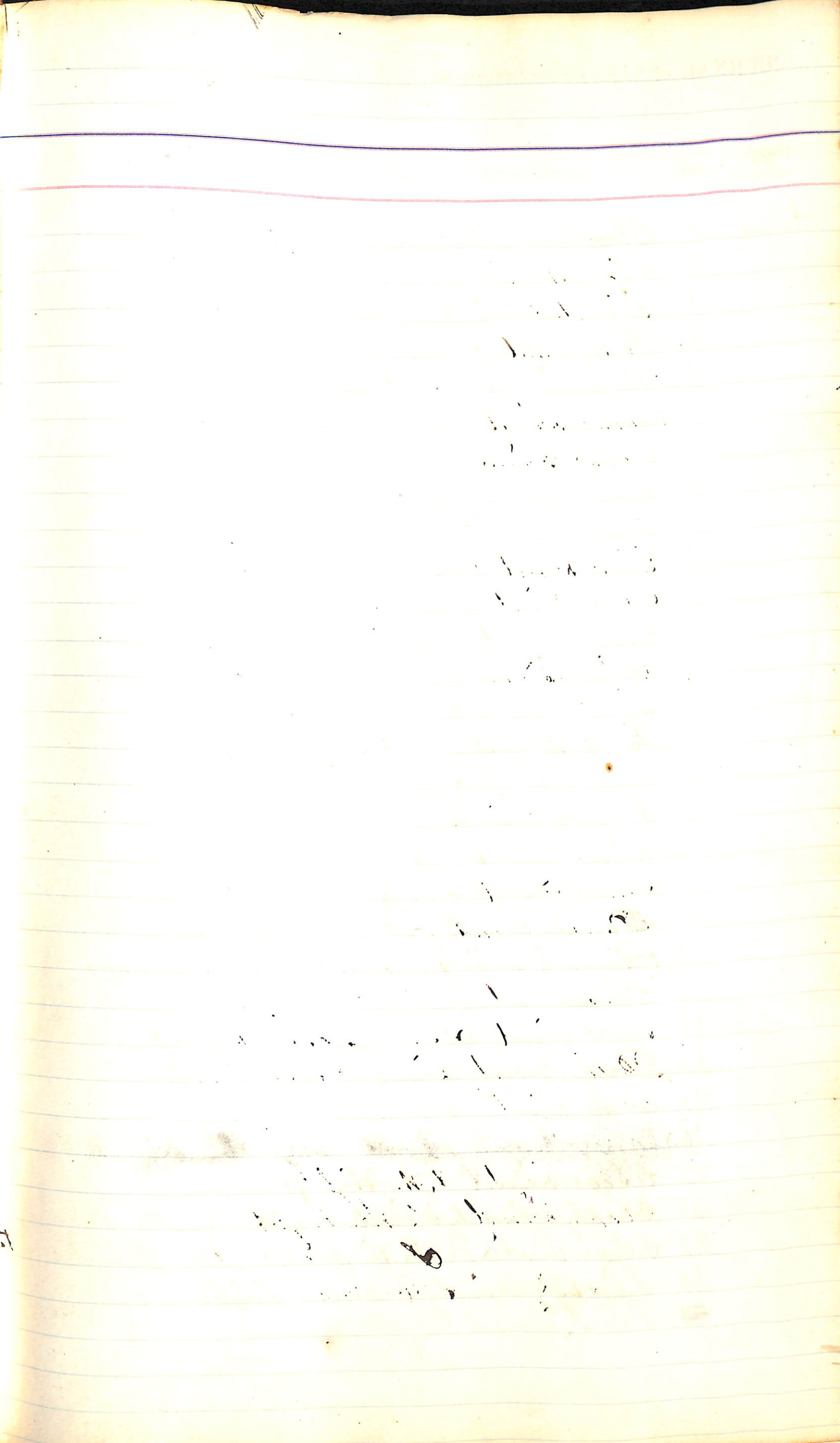
1891
MONTH.

DAY.

RECORD OF IMPORTANT EVENTS AT THE STATION, BAD WEATHER, &c.

May

- 1 Clear wind S. W. light
- 2 Clear wind S. W. fresh
- 3 Cloudy & rainy wind S. W. light
- 4 Clear wind S. W. strong
- 5 Partly cloudy wind N. W. strong & cold
- 6 Clear wind N. W. fresh
- 7 Clear wind S. W. light
- 8 Clear wind S. W. light
- 9 Clear wind S. W. light
- 10 Clear wind S. W. light
- 11 Clear wind S. W. light
- 12 Partly cloudy wind N. E. fresh
- 13 Clear wind S. W. light
- 14 Clear wind S. W. light
- 15 Clear wind S. W. light
- 16 Cloudy wind S. E. light raining
- 17 Clear wind N. W. strong breeze
- 18 Partly cloudy wind S. W. strong
- 19 Clear wind S. W. fresh
- 20 Partly cloudy wind S. W. fresh
- 21 Partly cloudy wind S. W. strong
- 22 Clear wind S. W. fresh
- 23 Clear wind S. W. fresh breeze
- 24 Partly cloudy wind S. W. fresh
- 25 Clear wind S. W. strong
- 26 Partly cloudy wind S. W. light
- 27 Clear wind N. W. light
- 28 Clear wind S. W. light
- 29 Cloudy wind N. W. light damp wet weather
- 30 Clear wind W. N. W. light
- 31 Clear wind S. W. light



1887/
MONTH.

DAY.

RECORD OF IMPORTANT EVENTS AT THE STATION, BAD WEATHER, &c.

June

- 1 Clear wind S.W. fresh breeze
- 2 Clear wind N.W. light
- 3 Clear wind S.W. light
- 4 Partly cloudy wind N.E. fresh
- 5 Clear wind Ch. E. fresh & cold
- 6 Clear wind S.W. light
- 7 Clear wind S.W. light
- 8 Clear wind N.W. fresh
- 9 Clear wind N.W. strong
- 10 Clear wind S.W. fresh breeze
- 11 Clear wind S.W. fresh
- 12 Clear wind N.W. light
- 13 Clear wind S.W. fresh
- 14 Clear wind S.W. light & warm
- 15 Partly cloudy wind Ch. E. light
- 16 Clear wind S.W. light
- 17 Cloudy wind N.E. light
- 18 Rainy wind N.E. light
- 19 Cloudy wind N.E. light & rainy
- 20 Cloudy wind N.E. light
- 21 Cloudy wind N.E. light & rainy
- 22 Clear wind N.E. fresh
- 23 Clear wind Ch. W. fresh
- 24 Clear wind Ch. W. fresh
- 25 Clear wind N.W. light
- 26 Clear wind S.W. light
- 27 Clear wind Ch. W. fresh
- 28 Partly cloudy wind N.W. fresh
- 29 Clear wind S.W. light
- 30 Partly cloudy N.W. light

Steam
Pa

June 4/91

Station inspected

C. W. West
St. Louis, Mo

Steamer Coctus came to-day brought
paint Turpentine & Oil

1891.
MONTH.

DAY.

RECORD OF IMPORTANT EVENTS AT THE STATION, BAD WEATHER, &c.

July

- 1 Partly cloudy wind S.W. light
- 2 Clear wind S.W. light
- 3 Clear wind S.W. light
- 4 Clear wind S.W. light
- 5 Partly cloudy wind S.W. light
- 6 Clear wind N.W. strong
- 7 Cloudy & rainy wind S.E. light
- 8 Clear wind S.W. light
- 9 Partly cloudy wind S.W. light
- 10 Clear wind S.W. light
- 11 Clear wind S.W. fresh
- 12 Clear wind S.W. light
- 13 Clear wind S.W. fresh
- 14 Clear wind S.W. fresh
- 15 Clear wind S.W. light
- 16 Partly cloudy wind S.W. light rain
- 17 Clear wind S.W. light
- 18 Cloudy & rainy wind S.W. light
- 19 Clear wind S.W. light
- 20 Clear wind S.W. light
- 21 Clear wind S.W. light
- 22 Clear wind S.W. moderate
- 23 Clear wind S.W. fresh
- 24 Clear wind N.W. with ^{partly} strong wind for a short
- 25 ~~Clear wind S.W. light~~
- 26 Clear wind N.W. light
- 27 Clear wind S.W. fresh
- 28 Clear wind S.W. fresh
- 29 Partly cloudy wind S.E. light
- 30 Cloudy wind S.E. light & showery
- 31 Clear wind S.W. fresh

U.S. Steamer stopped here today with peace
of force a hammer & nails

Station your order

Henry W. Pickens Inspector

188 .
MONTH.

DAY.

RECORD OF IMPORTANT EVENTS AT THE STATION, BAD WEATHER, &c.

188 . MONTH.	DAY.	RECORD OF IMPORTANT EVENTS AT THE STATION, BAD WEATHER, &c.
August	1	Clear wind S. W. fresh
	2	Clear wind S. W. light
	3	Clear wind S. W. fresh
	4	Clear wind S. E. light
	5	fair wind S. W. light
	6	Clear wind S. W. light
	7	Clear wind S. W. fresh
	8	Clear wind S. W. light
	9	Clear wind S. W. light
	10	Clear wind S. W. light
	11	Partly cloudy wind S. W. ^{light} with Thunder & rain
	12	Clear wind S. W. light
	13	Cloudy wind S. W. light
	14	Partly cloudy wind S. W. light Showery
	15	Cloudy wind N. S. W. light & rain
	16	Clear wind S. W. light
	17	Clear wind S. W. light
	18	Clear wind S. W. fresh
	19	Clear wind S. W. light
	20	Clear wind S. W. light
	21	Partly cloudy wind S. W. fresh Showery
	22	Clear wind S. W. fresh
	23	Clear wind S. W. light
	24	Clear wind S. W. fresh
	25	Clear wind S. W. light
	26	Partly cloudy wind S. W. light & Showery
	27	Partly cloudy wind S. W. light & Showery
	28	Rainy wind S. E. fresh
	29	Clear wind S. W. light
	30	Rainy wind S. E. light
	31	Cloudy wind S. E. light & Showery

August 18

the float stage

U. M. S. Steamer Coctus came to day left a Choinfer

1891.
MONTH.

DAY.

RECORD OF IMPORTANT EVENTS AT THE STATION, BAD WEATHER, &c.

1891. MONTH.	DAY.	RECORD OF IMPORTANT EVENTS AT THE STATION, BAD WEATHER, &c.
September	1	Partly cloudy wind N. E. light & showery
	2	Partly cloudy wind S. W. light
	3	Clear wind S. W. light
	4	Clear wind S. W. light
	5	Rainy wind N. E. light
	6	Raining wind E. N. E. light
	7	Cloudy wind N. E. light & rainy
	8	Clear wind N. W. light
	9	Clear wind N. W. light
	10	Clear wind W. N. W. light
	11	Clear wind S. W. light
	12	Clear wind S. W. light
	13	Clear wind S. W. fresh
	14	Clear wind S. W. fresh
	15	Clear wind N. W. fresh
	16	Clear wind N. W. light
	17	Clear wind N. W. light
	18	Clear wind S. W. light & warm
	19	Clear wind N. E. light
	20	Clear wind S. W. light & warm
	21	Clear wind S. W. light
	22	Clear wind S. W. light
	23	Clear wind S. W. light very warm
	24	Clear wind S. W. light
	25	Clear wind S. W. light very warm
	26	Clear wind S. W. light
	27	Clear wind S. W. light
	28	Clear wind S. W. light
	29	Clear wind S. W. fresh
	30	Clear wind N. W. fresh

United States Steamer Fern left Supplies today

last (copy)
with (copy)

the (copy)
the (copy)
the (copy)

the (copy)

MONTH.	DAY.	RECORD OF IMPORTANT EVENTS AT THE STATION, BAD WEATHER, &c.
October	1	Clear wind N.W. light
	2	Clear wind S.W. light
0	3	Clear wind S.W. light
	4	Clear wind S.W. light
	5	Clear wind S.W. light
	6	Clear wind N.E. fresh
	7	Cloudy wind N.E. light & rainy
	8	Partly cloudy wind N.E. light
	9	Partly cloudy wind N.E. light
	10	Partly cloudy wind N.E. light
	11	Cloudy wind N.E. light & rainy
	12	Cloudy wind N.E. fresh & rainy
	13	Weather rainy wind N.E. blowing a Gale
	14	Weather clear wind N.W. fresh
	15	Weather rainy wind S.W. light
	16	Weather clear wind N.W. light
	17	Weather clear wind N.E. light
	18	Clear wind N.E. light
	19	Partly cloudy wind N.E. light
	20	Weather rainy wind N.E. light
	21	Weather clear wind N.W. fresh
	22	Weather rainy wind N.E. light
	23	Weather clear wind N.W. very strong
	24	Clear wind N.W. Strong
	25	Clear wind N.W. fresh
	26	Partly cloudy wind S.W. fresh
	27	Weather cloudy wind S.W. fresh
	28	Clear wind N.W. fresh & strong
	29	Clear wind S.W. Strong
	30	Clear wind S.W. fresh
	31	Partly cloudy wind N.W. Strong

Supply Boat-Cactus U.S. ~~is~~ here to-day 19th
with Coal. & Boat for Station

JOURNAL of Light-house Station at *Pomham Rock*

1887/ MONTH.	DAY.	RECORD OF IMPORTANT EVENTS AT THE STATION, BAD WEATHER, &c.
November	1	Partly Cloudy wind N.W. strong
	2	Clear wind N.W. fresh
	3	Clear wind N.W. light
	4	Clear wind N.W. fresh
	5	Partly cloudy wind N.E. light
	6	Partly cloudy wind, N.E. strong
	7	Clear wind N.E. strong
	8	Clear wind N.W. light
	9	Partly cloudy wind N.E. light & fog
	10	Cloudy thick weather wind S.E. light
	11	Weather rainy wind S.W. fresh
	12	Clear wind S.W. light
	13	Clear wind N.W. light
	14	Clear wind N.W. light
	15	Clear wind N.W. light
	16	Cloudy wind E.S.E. light
	17	rainy blowing Gale wind S.W.
	18	Clear wind N.W. light
	19	Clear wind S.W. light
	20	Clear wind N.W. light
	21	Clear wind S.W. light
	22	Clear wind S.W. fresh
	23	Cloudy wind S.W. blowing Gale & raining
	24	Clear wind N.W. strong
	25	Clear wind S.W. fresh
	26	Clear wind S.W. light
	27	Clear wind S.W. fresh
	28	Cloudy wind N.W. fresh very cold
	29	Clear wind N.W. light
	30	Clear wind N.W. fresh

12 Carpenters came to work today on the
Summer Pitcher -
13. th left to-day

Nov 19/91 - Station inspected and in
good order -

B. H. West

W. Commander

US Navy

1884/
MONTH.

DAY.

RECORD OF IMPORTANT EVENTS AT THE STATION, BAD WEATHER, &c.

December	1	Clear wind N. N. light
	2	Partly Cloudy wind S. N. fresh
	3	Clear wind S. N. light & warm
	4	Clear wind W. light
	5	Clear wind N. N. fresh
	6	Clear wind N. N. light
	7	Breezy wind S. N. fresh
	8	Clear wind West. light
	9	Clear wind W. fresh
	10	Clear wind N. N. fresh
	11	Clear wind N. N. fresh
	12	Clear wind N. N. fresh
	13	Clear wind N. N. light
	14	Partly Cloudy wind N. N. light
	15	Partly Cloudy wind E. light
	16	Clear wind N. N. fresh
	17	Clear wind N. N. strong
	18	Clear wind N. N. light
	19	Clear wind N. N. fresh
	20	Cloudy wind E. N. E. light air
	21	Cloudy wind N. N. fog thick weather kind light
	22	Cloudy wind S. S. N. light fog & rain
	23	Morning thick fog wind S. N. clear 3 p.m. kind light
	24	Thick foggy weather wind N. E. light
	25	Cloudy damp weather moderate breeze
	26	Weather foggy & raining wind S. N. light
	27	Clear wind N. N. fresh
	28	Clear wind N. N. light
	29	Cloudy wind S. S. N. strong & showery
	30	Cloudy wind N. N. strong & raining
	31	Clear & cold wind N. N. strong

Rock

...THER, &c.

fresh
& warm

h

light
lit

ing
lit

air
a kind light

rain
3 p.m. kind light

light
breeze
light

showery
raining
ing

1892
MONTH.

DAY.

RECORD OF IMPORTANT EVENTS AT THE STATION, BAD WEATHER, &c.

January

- 1 Partly cloudy wind, N. W. strong
- 2 Rainy wind S. E. & blowing a Gale
- 3 Clear wind, N. W. fresh
- 4 Clear wind, N. W. strong & cold
- 5 Cloudy wind, N. E. light ~~strong~~ & rain
- 6 Cloudy wind N. E. light, snow & rain
- 7 Clear wind, N. W. fresh
- 8 Clear wind S. W. fresh
- 9 Clear wind N. W. light
- 10 Partly cloudy wind N. W. light
- 11 Partly cloudy wind N. E. light
- 12 Cloudy wind N. E. light, thick rainy weather
- 13 Thick foggy weather wind N. E. light
- 14 Cloudy wind S. W. strong rainy & snow
- 15 Cloudy rain snow & ^{fleet} had wind N. E. fresh
- 16 Clear & cold wind, N. W. strong
- 17 Clear & cold wind N. W. strong
- 18 Partly cloudy wind N. W. light & showery
- 19 weather cloudy wind, N. W. fresh snowing
- 20 Clear wind N. W. light
- 21 Clear wind S. W. strong
- 22 Clear wind, S. W. fresh
- 23 Clear wind S. W. light
- 24 Clear wind, S. W. light
- 25 Clear wind S. W. light
- 26 Clear wind N. W. blowing a Gale
- 27 Partly cloudy wind, N. W. blowing Gale
- 28 Cloudy wind N. W. light
- 29 Cloudy wind, N. E.
- 30 Cloudy wind N. E. fresh with snow
- 31 Clear wind N. E. strong

dense fog

River full drift ice

Very Cold

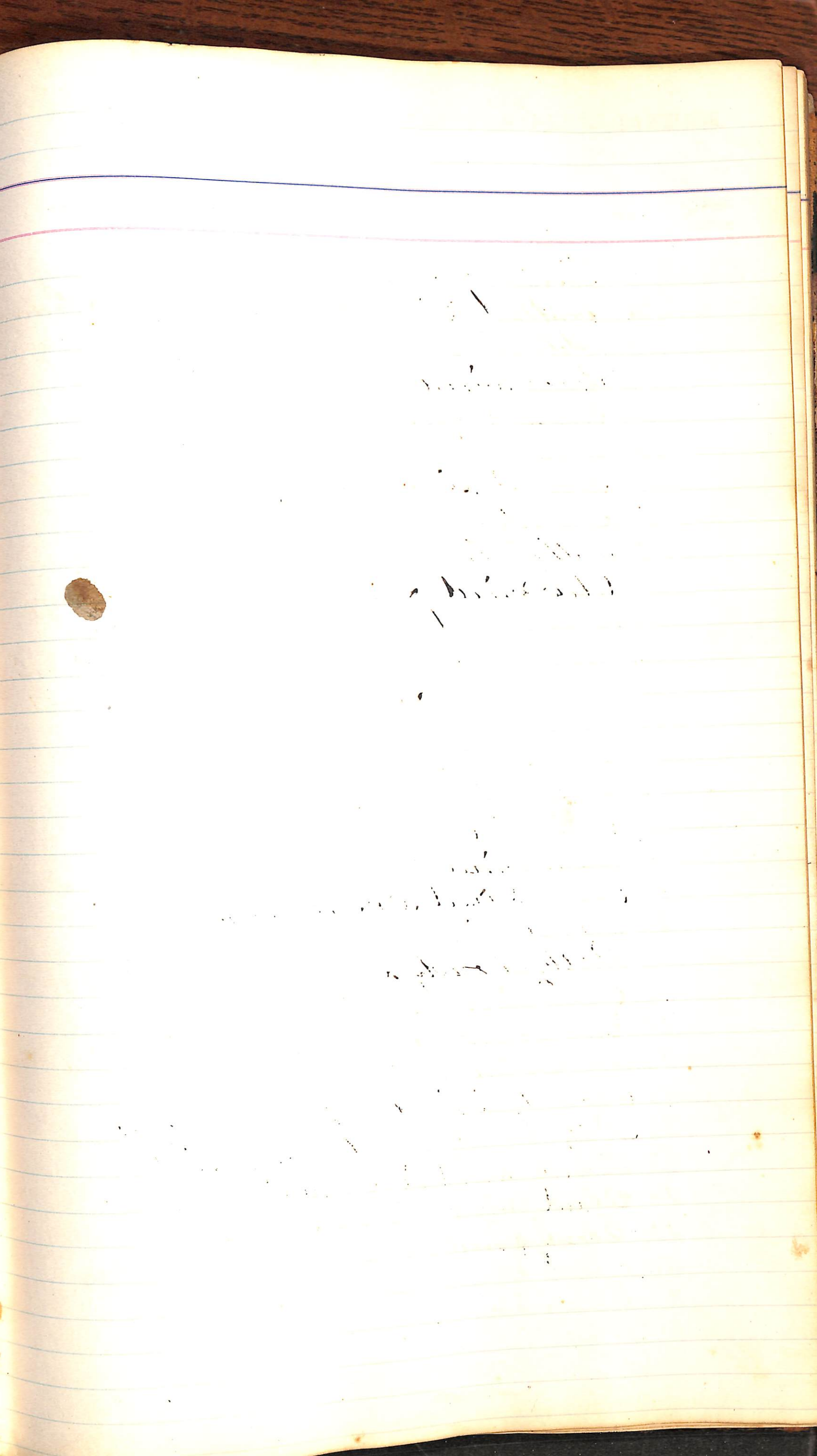
1892.
MONTH.

DAY.

RECORD OF IMPORTANT EVENTS AT THE STATION, BAD WEATHER, &c.

February

- | | |
|----|--|
| 1 | Partly Cloudy wind Ch. W. light |
| 2 | Cloudy wind S. E. light with snow |
| 3 | weather Cloudy wind N. W. light, Snowy |
| 4 | Clear wind N. W. light |
| 5 | Clear wind Ch. W. light |
| 6 | Clear wind Ch. W. fresh |
| 7 | Cloudy wind S. W. fresh River full drift |
| 8 | Cloudy wind S. E. light & snow |
| 9 | weather Cloudy wind Ch. W. light |
| 10 | Clear wind S. E. light |
| 11 | Clear wind S. W. light |
| 12 | Cloudy wind Ch. E. fresh & snowing |
| 13 | Clear wind N. W. light & very cold |
| 14 | Clear wind S. W. light |
| 15 | Clear wind Ch. W. strong |
| 16 | Clear wind N. E. strong |
| 17 | Clear wind Ch. W. light |
| 18 | Clear wind Ch. light |
| 19 | Clear wind Ch. W. light |
| 20 | Cloudy wind Ch. W. light |
| 21 | Partly Cloudy wind Ch. E. Light |
| 22 | Clear wind Ch. W. fresh |
| 23 | Partly Cloudy wind Ch. E. light light snow |
| 24 | Cloudy wind Ch. E. light |
| 25 | Cloudy wind Ch. E. light |
| 26 | Partly Cloudy wind Ch. E. light |
| 27 | Cloudy wind N. E. light |
| 28 | Cloudy wind N. E. strong |
| 29 | Cloudy wind N. E. strong |



JOURNAL of Light-house Station at Pomham Rock

1882
MONTH.

DAY.

RECORD OF IMPORTANT EVENTS AT THE STATION, BAD WEATHER, &c.

1882 MONTH.	DAY.	RECORD OF IMPORTANT EVENTS AT THE STATION, BAD WEATHER, &c.
March	1	weather cloudy wind ch. E. Strong with
	2	weather cloudy wind N. E. Strong
	3	still cloudy wind N. E. snowing
	4	clear wind N. W. fresh
	5	clear wind ch. W. fresh
	6	clear wind N. W. Strong
	7	clear wind N. W. light
	8	cloudy wind N. light
	9	weather ^{cloudy} wind S. W. light, rainy
	10	weather cloudy wind west. foggy
	11	clear wind W. S. W. high wind
	12	clear wind ch. W. blowing a Gale
	13	clear wind ch. W. very Strong
	14	clear wind ch. W. still blowing a Gale
	15	clear wind N. W. Strong
	16	clear wind S. W. Strong
	17	clear wind ch. W. light
	18	cloudy wind ch. E. light a great snow
	19	clear wind N. W. blowing Gale
	20	partly cloudy wind ch. W. blowing Gale
	21	clear wind ch. W. Strong
	22	clear wind S. W. fresh
	23	clear wind S. W. light
	24	clear wind N. W. Strong
	25	clear wind ch. W. light
	26	clear wind ch. W. light
	27	clear wind ch. E. fresh
	28	clear wind ch. E. light
	29	clear wind ch. W. fresh breeze
	30	clear wind ch. W. light
	31	clear wind S. W. light pleasant

in & snow
Cold blowing a Gale severe snow storm
with high wind

stern sheet & scum

March 22/92 - 9 tubes inspected -
Paint as directed inside and outside,
C H West
W Amundsen
W many

JOURNAL of Light-house Station at Tomham Rock

1882
MONTH.

DAY.

RECORD OF IMPORTANT EVENTS AT THE STATION, BAD WEATHER, &c.

1882 MONTH.	DAY.	RECORD OF IMPORTANT EVENTS AT THE STATION, BAD WEATHER, &c.
April	1	Clear wind S.W. light breeze
	2	Weather Clear wind S.W. a Gale
	3	Clear wind S.W. fresh breeze
	4	Weather Clear wind S.W. light
	5	Weather Clear wind S.W. light
	6	Weather Clear wind S.W. fresh breeze
	7	Weather Clear wind S.W. fresh
	8	Weather Clear wind S.W. light
	9	Partly cloudy wind N.W. fresh
	10	Clear wind N.W. very strong
	11	Weather Clear wind N.W. blowing Gale
	12	Weather Clear wind N.W. strong breeze
	13	Weather Clear wind N.W. strong
	14	Clear wind S.W. fresh
	15	Partly cloudy wind S.W. light
	16	Clear wind S.W. light
	17	Clear wind N.W. fresh breeze
	18	Clear wind S.W. light
	19	Clear wind S.W. light
	20	Partly cloudy wind S.E. fresh & rain
	21	Cloudy wind S.W. strong
	22	Cloudy wind S.W. light & showers
	23	Clear wind S.W. fresh
	24	Weather Clear wind S.W. light & warm
	25	Weather Clear wind N.W. fresh breeze
	26	Clear wind S.W. fresh breeze
	27	Weather Clear wind S.W. fresh
	28	Partly cloudy wind S.W. strong
	29	Cloudy wind S.W. strong
	30	Clear wind N.W. fresh breeze

U. S. Steamer Cactus here to-day
brought lime

1887
MONTH.

DAY.

RECORD OF IMPORTANT EVENTS AT THE STATION, BAD WEATHER, &c.

May

1	Cloudy wind S. W. fresh breeze & Rainy
2	Clear wind S. W. Light & damp
3	Cloudy wind S. W. fresh & showery
4	Clear wind S. W. fresh breeze
5	Clear wind S. W. light & warm
6	Partly Cloudy wind S. W. fresh
7	Clear wind S. W. fresh
8	Clear wind S. W. Light
9	Clear wind S. W. fresh
10	Partly cloudy wind S. W. fresh breeze
11	Clear wind S. W. light
12	Cloudy wind S. W. fresh
13	Partly cloudy wind S. E. Light
14	Partly cloudy wind S. E. fresh breeze
15	Cloudy wind S. E. Light & rainy
16	Rainy wind S. E. light
17	Clear wind S. W. Strong
18	Weather Clear wind S. W.
19	Weather Cloudy wind S. W. fresh
20	Partly cloudy wind S. W. fresh
21	Rainy wind S. E. light
22	Weather Rainy wind S. E. Light
23	Cloudy wind S. W. damp rainy weather
24	Cloudy wind S. W. fresh
25	Clear wind S. W. blowing Gale
26	Partly cloudy wind S. E. fresh
27	Clear wind S. W. fresh & rainy
28	Clear wind S. W. Light
29	Clear wind S. W. fresh
30	Cloudy wind S. W. light with rain
31	Clear wind S. W. fresh

U. S. Steamer Mistletoe here 19th Capt. ~~W. H. West~~
with Lumber for this Station & Bricks.

May 20/92 Station inspected
and in very good order -

C. H. West
Commander
Army

Carpenters & Masons Came 20th

JOURNAL of Light-house Station at *Pomham Rock*

1882
MONTH.

DAY.

RECORD OF IMPORTANT EVENTS AT THE STATION, BAD WEATHER, &c.

June

1	Clear wind S. W. light
2	Clear wind S. W. fresh
3	Partly cloudy S. E. showery light
4	Clear wind S. W. fresh breeze
5	Clear wind S. W. strong
6	Clear wind S. W. light
7	Clear wind S. W. light
8	Partly cloudy wind S. W. fresh
9	damp wind S. W. fresh
10	Cloudy wind N. E. strong
11	Clear wind S. W. light
12	weather clear wind S. W. fresh
13	Clear wind S. W. fresh
14	Clear wind S. W. fresh
15	Clear wind N. W. light
16	Clear wind S. W. light Thunder & light
17	Clear wind S. W. fresh
18	Partly cloudy wind S. E. light & showery
19	Clear wind S. W. fresh
20	Clear wind W. strong breeze
21	Clear wind W. fresh breeze
22	Clear wind N. W. light
23	Partly cloudy wind N. W. light & showery
24	Clear wind S. W. light
25	Clear wind S. W. light
26	Clear wind S. W. fresh
27	Cloudy wind S. E. fresh rainy
28	Clear wind S. W. strong breeze
29	Partly cloudy wind S. W. fresh
30	Clear wind S. W. strong

thing

1882
MONTH.

DAY.

RECORD OF IMPORTANT EVENTS AT THE STATION, BAD WEATHER, &c.

July

- 1 Clear wind S. W. fresh breeze
- 2 Clear wind S. W. strong
- 3 weather rainy wind S. W. blowing Gale
- 4 weather Clear wind ch. W. very strong
- 5 weather Clear wind S. W. light
- 6 Clear wind S. W. light breeze
- 7 Clear wind S. W. light
- 8 Clear wind N. W. fresh
- 9 Clear wind N. W. light
- 10 Clear wind S. W. light & warm
- 11 weather Clear wind S. W. light
- 12 weather Clear wind S. W. light-breeze
- 13 weather Clear wind S. W. light
- 14 weather Clear wind S. W. light &
- 15 weather Clear wind ch. W. light
- 16 weather Clear wind ch. W. fresh
- 17 weather Clear wind ch. W. moderate breeze
- 18 Clear wind ch. W. light
- 19 Clear wind ch. W. light
- 20 Clear wind ch. W. light
- 21 Clear wind S. W. fresh
- 22 Clear wind S. W. light
- 23 Clear wind S. W. light
- 24 Clear wind S. W. light
- 25 Clear wind S. W. fresh
- 26 Clear wind ch. W. fresh
- 27 Clear wind ch. W. light
- 28 Clear wind ch. W. light
- 29 Clear wind N. W. light
- 30 Clear wind S. E. light
- 31 Clear wind N. W. light

very low

very low

July

very warm

very warm

July 27th. 1892. Muckewat - Station in my yard under

H. J. Schley

Captain Inspector

1872
MONTH.

DAY.

RECORD OF IMPORTANT EVENTS AT THE STATION, BAD WEATHER, &c.

August

- 1 Partly cloudy wind Ch. E. light
- 2 Cloudy wind S. E. Light & rainy
- 3 Clear wind S. W. Light
- 4 Partly cloudy wind S. W. Showery
- 5 Clear wind S. W. light
- 6 Clear wind S. W. Light very warm
- 7 Clear wind S. W. light & pleasant
- 8 Clear wind S. W. fresh
- 9 Clear wind S. W. Strong breeze
- 10 Clear wind S. W. fresh
- 11 Partly cloudy wind S. W. light Thun
- 12 Showery wind S. W. light
- 13 Cloudy wind Ch. E. light
- 14 Clear wind S. W. light & warm
- 15 Clear wind Ch. W. light
- 16 Clear wind Ch. W. fresh
- 17 Clear wind S. W. light
- 18 Clear wind S. W. light
- 19 Clear wind S. W. light
- 20 Clear wind S. W. light
- 21 Clear wind S. W. light
- 22 Clear wind S. W. light
- 23 Clear wind S. W. light
- 24 Clear wind S. W. light
- 25 Clear wind S. E. light
- 26 Cloudy wind S. E. light & raining
- 27 Cloudy wind S. E. light damp
- 28 Clear wind Ch. W. light
- 29 Partly cloudy wind S. E. damp
- 30 Partly cloudy wind S. E. light
- 31 Partly cloudy wind Ch. W. light & showery

& Divided Lighting

1889
MONTH.

DAY.

RECORD OF IMPORTANT EVENTS AT THE STATION, BAD WEATHER, &c.

September

- 1 Clear wind N. W. fresh very pleasant
- 2 Clear wind S. W. light
- 3 Clear wind S. W. light
- 4 Clear wind N. W. light
- 5 Clear wind N. W. light
- 6 Clear wind N. W. fresh
- 7 Clear wind N. W. light
- 8 Clear wind S. W. light
- 9 Clear wind S. W. light
- 10 Clear wind S. W. light
- 11 Clear wind S. W. light
- 12 Clear wind S. E. fresh
- 13 Partly Cloudy wind S. E. light
- 14 Raining wind S. E. blowing a Gale
- 15 Clear wind N. W. light
- 16 Clear wind S. W. light
- 17 Clear wind N. W. light & warm
- 18 Clear wind S. W. strong
- 19 Clear wind N. W. fresh
- 20 Clear wind N. W. light
- 21 Clear wind N. W. light
- 22 Clear wind S. W. fresh
- 23 Cloudy wind S. W. light - rain
- 24 Cloudy wind S. W. fresh showers
- 25 Cloudy wind S. W. light
- 26 Commenced Thunder & Lightning
- 27 Clear wind N. W. light
- 28 Clear wind S. W. fresh
- 29 Clear wind N. W. fresh
- 30 Clear wind S. W. light

Supply Vessel *Armenia*, Capt. ~~Wright~~ ^{Wright} ~~Caswell~~ ^{Caswell}
to day 13th Sept. 1892 left Supplies for
Light House

blowing a Gale cleared of about noon